

LEA Name : Wilkes-Barre Area SD  
Address : 730 S Main St  
Wilkes Barre , PA 18711

County : Luzerne  
AUN Number : 118408852  
LEA Type : SD

# Annual Financial Report Accuracy Certification Statement

For Fiscal Year Ending  
6/30/2016

Pennsylvania Department of Education


&

Office of Comptroller Operations

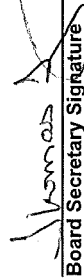
PDE-2056: Intermediate Unit

PDE-2057: School District, AVTS/CTC, Charter School,  
and Special Program Jointure

**CERTIFICATION:** By signing this page I agree that the electronic data submitted is a complete and accurate statement of the financial operations and status of the local education agency for the fiscal year. It has been prepared in accordance with generally accepted accounting principles and established Commonwealth of PA reporting guidelines.

  
Chief School Administrator Signature

11/17  
Date

  
Board Secretary Signature

11/17  
Date

Tom Telesz

(570)826-7111 Ext :1162

Contact Person

Contact Person Telephone Number

ttelesz@wbasd.k12.pa.us

(570)819-5011

Contact Person E-mail Address

Contact Person Fax Number

# Audit Certification

## Annual Financial Report:

For Fiscal Year Ending 6/30/2016

(Pursuant to PA School Code Section 218(b))

LEA Name : Wilkes-Barre Area SD  
AUN Number : 118408852  
County : Luzerne

Audit Certification Due:  
12/31/2016

This certification is applicable to:

Orig. Annual Financial Report submitted to  
Comptroller Operations: 1/11/17  
Date

Annual Financial Report revisions submitted on: \_\_\_\_\_  
Date

Auditing Firm:

Auditor Contact Name:

Auditor Phone:

Auditor E-mail:

CERTIFICATION: By signing this page I agree that the financial statements of the school have been properly audited as noted above pursuant to Article XXIV, and in the auditor's professional opinion, the Annual Financial Report (PDE-2057) submitted on the date referenced is materially consistent with the audited financial statements.

Chief School Administrator

[Signature]  
Signature

1/11/17  
Date

Board Secretary

[Signature]  
Signature

1/11/17  
Date

Tom Telesz

Contact Person

ttelesz@wbasd.k12.pa.us

Contact Person E-mail Address

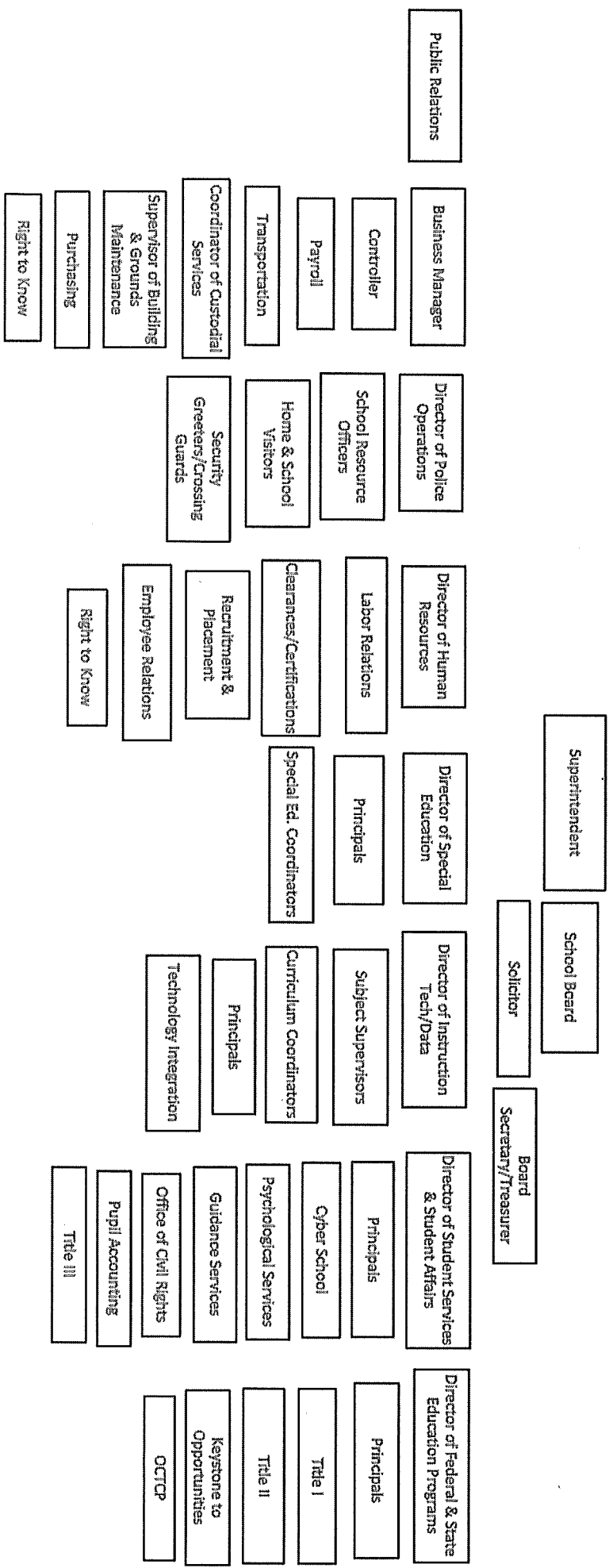
(570)826-7111 Ext :1162

Contact Person Telephone Number

(570)819-5011

Contact Person Fax Number

# Wilkes-Barre Area School District



<u>Val Number</u>	<u>Description</u>	<u>Justification</u>
13020	<p>REG: Interfund Trans-Out must equal REG Interfund Trans-In plus REP Interfund Trans In minus REP Interfund Trans-Out. (REG 5200 = REG 9300 + REP 9300 - REP 5200) Reference amts do not include any incoming transfers of the Fid. Funds. Include Fid. Fund incoming transfer info in the justification. Correct or enter a justification.</p> <p>Transfers Out (REG 5200): \$2,927,147.00            (REG 9300) + (REP 9300) - (REP 5200) : \$2,827,147.00</p>	Transfers of \$100,000.00 were made to fiduciary funds.
40530	<p>Expenditure Detail: Total should be greater than or equal to Federal column.</p> <p>Please verify following fund and function codes:            Fund 10 Function 2850;</p>	Total of function 2850 does exceed the federal column.
50470	<p>SESS - 2440 Nursing Services: SESS Schedule amounts for Special Education vary from prior year by 40% or more. Correct the data or enter a justification.</p> <p>SESS Schedule 2440: \$657,676.17            Prior Year SESS Schedule 2440: \$317,546.00</p>	Nursing services provided by the IU have substantially increased from the prior year. Additionally, the district has hired its own occupational therapists.

Amounts Expressed in Whole Dollars

	<u>General Fund</u> <u>(10)</u>	<u>Public Purpose Trust</u> <u>(27)</u>	<u>Other Compt Approved</u> <u>(28)</u>	<u>Athletic / Activity</u> <u>(29)</u>	<u>Capital Reserve (690.</u> <u>1850)</u> <u>(31)</u>
<b>Assets And Deferred Outflows Of Resources</b>					
<b>Assets</b>					
0100 Cash and Cash Equivalents	16,527,403				
0110 Investments					
0120 Taxes Receivable	4,889,356				
0130 Due From Other Funds	108,644				
0141 Due From Other Governments	1,907,841				
0142 State Revenue Receivable	3,841,658				
0143 Federal Revenue Receivable	425,043				
0145 Other Intergovernmental Revenue Receivable					
0146 Due from Primary Government					
0147 Due from Component Unit					
0150 Other Receivables	1,134,375				
0170 Inventories	124,000				
0180 Prepaid Expenses (Expenditures)					
0190 Other Current Assets					
<b>Total Assets</b>	<b>\$28,958,320</b>				
0910 Deferred Outflows of Resources					
<b>Total Assets And Deferred Outflows Of Resources</b>	<b>\$28,958,320</b>				

Amounts Expressed in Whole Dollars

	<u>Capital Reserve (1431)</u> <u>(32)</u>	<u>Other Capital Projects</u> <u>Fund</u> <u>(39)</u>	<u>Debt Service</u> <u>(40)</u>	<u>Permanent</u> <u>(90)</u>	<u>Total Governmental</u> <u>Funds</u>
<b>Assets And Deferred Outflows Of Resources</b>					
<b>Assets</b>					
0100 Cash and Cash Equivalents		87,265	9,297		16,623,965
0110 Investments					
0120 Taxes Receivable					4,889,356
0130 Due From Other Funds		1,835,799			1,944,443
0141 Due From Other Governments					1,907,841
0142 State Revenue Receivable					3,841,658
0143 Federal Revenue Receivable					425,043
0145 Other Intergovernmental Revenue Receivable					
0146 Due from Primary Government					
0147 Due from Component Unit					
0150 Other Receivables					1,134,375
0170 Inventories					124,000
0180 Prepaid Expenses (Expenditures)					
0190 Other Current Assets					
<b>Total Assets</b>		<b>\$1,923,064</b>	<b>\$9,297</b>		<b>\$30,890,681</b>
0910 Deferred Outflows of Resources					
<b>Total Assets And Deferred Outflows Of Resources</b>		<b>\$1,923,064</b>	<b>\$9,297</b>		<b>\$30,890,681</b>

Amounts Expressed in Whole Dollars	<u>General Fund</u> <u>(10)</u>	<u>Public Purpose Trust</u> <u>(27)</u>	<u>Other Compt Approved</u> <u>(28)</u>	<u>Athletic / Activity</u> <u>(29)</u>	<u>Capital Reserve (690.</u> <u>1850)</u> <u>(31)</u>
<b>Liabilities And Deferred Inflows Of Resources And Fund Balances</b>					
<b>Liabilities</b>					
0400 Due to Other Funds	2,003,299				
0411 Due to Other Governments	1,864,112				
0412 Due to Primary Government					
0413 Due to Component Unit					
0420 Accounts Payable	1,439,765				
0430 Contracts Payable					
0440 Current Portion of Long-Term Debt					
0450 Short-Term Payables					
0461 Accrued Salaries and Benefits	8,635,567				
0462 Payroll Deductions and Withholding	7,894,397				
0480 Unearned Revenues	5,293,304				
0490 Other Current Liabilities					
<b>Total Liabilities</b>	<b>\$27,130,444</b>				
0950 Deferred Inflows of Resources					
<b>Fund Balances</b>					
0810 Nonspendable Fund Balance	124,000				
0820 Restricted Fund Balance					
0830 Committed Fund Balance					
0840 Assigned Fund Balance					
0850 Unassigned Fund Balance	1,703,876				
<b>Total Fund Balances</b>	<b>\$1,827,876</b>				
<b>Total Liabilities, Deferred Inflows Of Resources And Fund Balances</b>	<b>\$28,958,320</b>				

Amounts Expressed in Whole Dollars

	<u>Capital Reserve (1431)</u> <u>(32)</u>	<u>Other Capital Projects</u> <u>Fund</u> <u>(39)</u>	<u>Debt Service</u> <u>(40)</u>	<u>Permanent</u> <u>(90)</u>	<u>Total Governmental</u> <u>Funds</u>
<b>Liabilities And Deferred Inflows Of Resources And Fund Balances</b>					
<b>Liabilities</b>					
0400 Due to Other Funds					2,003,299
0411 Due to Other Governments					1,864,112
0412 Due to Primary Government					
0413 Due to Component Unit					
0420 Accounts Payable		99,623			1,539,388
0430 Contracts Payable					
0440 Current Portion of Long-Term Debt					
0450 Short-Term Payables					
0461 Accrued Salaries and Benefits					8,635,567
0462 Payroll Deductions and Withholding					7,894,397
0480 Unearned Revenues					5,293,304
0490 Other Current Liabilities					
<b>Total Liabilities</b>		<b>\$99,623</b>			<b>\$27,230,067</b>
0950 Deferred Inflows of Resources					
<b>Fund Balances</b>					
0810 Nonspendable Fund Balance					124,000
0820 Restricted Fund Balance					
0830 Committed Fund Balance					
0840 Assigned Fund Balance		1,823,441	9,297		1,832,738
0850 Unassigned Fund Balance					1,703,876
<b>Total Fund Balances</b>		<b>\$1,823,441</b>	<b>\$9,297</b>		<b>\$3,660,614</b>
<b>Total Liabilities, Deferred Inflows Of Resources And Fund Balances</b>		<b>\$1,923,064</b>	<b>\$9,297</b>		<b>\$30,890,681</b>



Amounts Expressed in Whole Dollars	<u>General Fund</u> <u>(10)</u>	<u>Public Purpose Trust</u> <u>(27)</u>	<u>Other Compt Approved</u> <u>(28)</u>	<u>Athletic / Activity</u> <u>(29)</u>	<u>Capital Reserve (690.</u> <u>1850)</u> <u>(31)</u>
<b>Revenues</b>					
6000 Revenue from Local Sources	59,714,885				
7000 Revenue from State Sources	45,528,910				
8000 Revenue from Federal Sources	4,612,270				
<b>Total Revenues</b>	<b>\$109,856,065</b>				
<b>Expenditures</b>					
1000 Instruction	78,749,728				
2000 Support Services	30,414,007				
3000 Operation of Non-Instructional Services	2,281,126				
4000 Facilities Acquisition, Construction and Improvement Services					
5110 Debt Service	89,679				
5130 Refund of Prior Year Revenues / Receipts	257,785				
5140 Short-Term Borrowing – Interest and Costs					
<b>Total Expenditures</b>	<b>\$111,792,325</b>				
<b>Excess (Deficiency) Of Revenues Over Expenditures</b>	<b>(\$1,936,260)</b>				
<b>Other Financing Sources (Uses)</b>					
9110 Face Value of Bonds Issued					
9120 Proceeds from Refunding of Bonds					
9130 Bond Premiums					
9200 Proceeds from Extended-Term Financing					
9300 Interfund Transfers - IN					
9400 Sale of or Compensation for Loss of Fixed Assets					
9710 Transfers from Component Units					
9720 Transfers from Primary Governments					
9910 Other Financing Sources Not Listed in the 9000 Series					
9990 Insurance Recoveries					
5120 Debt Service – Refunded Bonds					
5150 Bond Discounts					
5200 Interfund Transfers – Out	2,927,147				
5300 Transfers Out to Component Units/Primary Governments					
<b>Total Other Financing Sources (Uses)</b>	<b>(\$2,927,147)</b>				

Amounts Expressed in Whole Dollars	<u>Capital Reserve (1431)</u> <u>(32)</u>	<u>Other Capital Projects</u> <u>Fund</u> <u>(39)</u>	<u>Debt Service</u> <u>(40)</u>	<u>Permanent</u> <u>(90)</u>	<u>Total Governmental</u> <u>Funds</u>
<b>Revenues</b>					
6000 Revenue from Local Sources		128	62		59,715,075
7000 Revenue from State Sources					45,528,910
8000 Revenue from Federal Sources					4,612,270
<b>Total Revenues</b>		<b>\$128</b>	<b>\$62</b>		<b>\$109,856,255</b>
<b>Expenditures</b>					
1000 Instruction					78,749,728
2000 Support Services		88			30,414,095
3000 Operation of Non-Instructional Services					2,281,126
4000 Facilities Acquisition, Construction and Improvement Services		8,982,553			8,982,553
5110 Debt Service			2,827,194		2,916,873
5130 Refund of Prior Year Revenues / Receipts					257,785
5140 Short-Term Borrowing – Interest and Costs					
<b>Total Expenditures</b>		<b>\$8,982,641</b>	<b>\$2,827,194</b>		<b>\$123,602,160</b>
<b>Excess (Deficiency) Of Revenues Over Expenditures</b>		<b>(\$8,982,513)</b>	<b>(\$2,827,132)</b>		<b>(\$13,745,905)</b>
<b>Other Financing Sources (Uses)</b>					
9110 Face Value of Bonds Issued					
9120 Proceeds from Refunding of Bonds					
9130 Bond Premiums					
9200 Proceeds from Extended-Term Financing		6,503,459			6,503,459
9300 Interfund Transfers - IN			2,827,147		2,827,147
9400 Sale of or Compensation for Loss of Fixed Assets					
9710 Transfers from Component Units					
9720 Transfers from Primary Governments					
9910 Other Financing Sources Not Listed in the 9000 Series					
9990 Insurance Recoveries					
5120 Debt Service – Refunded Bonds					
5150 Bond Discounts					
5200 Interfund Transfers – Out					2,927,147
5300 Transfers Out to Component Units/Primary Governments					
<b>Total Other Financing Sources (Uses)</b>		<b>\$6,503,459</b>	<b>\$2,827,147</b>		<b>\$6,403,459</b>

Amounts Expressed in Whole Dollars	<u>General Fund</u> <u>(10)</u>	<u>Public Purpose Trust</u> <u>(27)</u>	<u>Other Compt Approved</u> <u>(28)</u>	<u>Athletic / Activity</u> <u>(29)</u>	<u>Capital Reserve</u> <u>(690.</u> <u>1850)</u> <u>(31)</u>
<b>Special And Extraordinary Items</b>					
9920 Special Items – Gains					
9930 Extraordinary Items – Gains					
5520 Special Items – Losses					
5530 Extraordinary Items – Losses					
<b>Net Change In Fund Balances</b>	<b>(\$4,863,407)</b>				
<b>Fund Balance</b>					
0001 Fund Balance - Beginning of Fiscal Year	6,691,283				
<b>Fund Balance - End Of Year</b>	<b>\$1,827,876</b>				

Amounts Expressed in Whole Dollars	<u>Capital Reserve (1431)</u> <u>(32)</u>	<u>Other Capital Projects</u> <u>Fund</u> <u>(39)</u>	<u>Debt Service</u> <u>(40)</u>	<u>Permanent</u> <u>(90)</u>	<u>Total Governmental</u> <u>Funds</u>
<b>Special And Extraordinary Items</b>					
9920 Special Items – Gains					
9930 Extraordinary Items – Gains					
5520 Special Items – Losses					
5530 Extraordinary Items – Losses					
<b>Net Change In Fund Balances</b>		<b>(\$2,479,054)</b>	<b>\$15</b>		<b>(\$7,342,446)</b>
<b>Fund Balance</b>					
0001 Fund Balance - Beginning of Fiscal Year		4,302,495	9,282		11,003,060
<b>Fund Balance - End Of Year</b>		<b>\$1,823,441</b>	<b>\$9,297</b>		<b>\$3,660,614</b>

Amounts Expressed in Whole Dollars	<u>Food Service</u> <u>(51)</u>	<u>Child Care</u> <u>Operations</u> <u>(52)</u>	<u>Other Enterprise</u> <u>(58)</u>	<u>TOTAL</u>	<u>Internal Service</u> <u>(60)</u>
<b>Assets And Deferred Outflows Of Resources</b>					
<b>Current Assets</b>					
0100 Cash and Cash Equivalents	2,240,600			2,240,600	
0110 Investments					
0130 Due From Other Funds					
0141 Due From Other Governments					
0142 State Revenue Receivable	2,745			2,745	
0143 Federal Revenue Receivable	52,791			52,791	
0146 Due from Primary Government					
0147 Due from Component Unit					
0150 Other Receivables	88,048			88,048	
0170 Inventories	16,522			16,522	
0180 Prepaid Expenses (Expenditures)					
0190 Other Current Assets					
<b>Total Current Assets</b>	<b>\$2,400,706</b>			<b>\$2,400,706</b>	
<b>Noncurrent Assets</b>					
0211 Land					
0212 Site Improvements (Net)					
0220 Buildings and Building Improvements (Net)					
0230 Machinery, Equipment and Furniture (Net)	272,464			272,464	
0250 Construction in Progress					
0260 Long Term Prepayments					
0290 Other Noncurrent Assets					
<b>Total Noncurrent Assets</b>	<b>\$272,464</b>			<b>\$272,464</b>	
0910 Deferred Outflows of Resources					
<b>Total Assets And Deferred Outflows Of Resources</b>	<b>\$2,673,170</b>			<b>\$2,673,170</b>	

Amounts Expressed in Whole Dollars	<u>Food Service</u> <u>(51)</u>	<u>Child Care</u> <u>Operations</u> <u>(52)</u>	<u>Other Enterprise</u> <u>(58)</u>	<u>TOTAL</u>	<u>Internal Service</u> <u>(60)</u>
<b>Liabilities And Deferred Inflows Of Resources And Net Position</b>					
<b>Current Liabilities</b>					
0400 Due to Other Funds	108,645			108,645	
0411 Due to Other Governments					
0413 Due to Component Unit					
0420 Accounts Payable	117,470			117,470	
0430 Contracts Payable					
0440 Current Portion of Long-Term Debt					
0450 Short-Term Payables					
0461 Accrued Salaries and Benefits	19,848			19,848	
0462 Payroll Deductions and Withholding					
0480 Unearned Revenues					
0490 Other Current Liabilities					
<b>Total Current Liabilities</b>	<b>\$245,963</b>			<b>\$245,963</b>	
<b>Noncurrent Liabilities</b>					
0510 Bonds Payable					
0520 Extended-Term Financing Agreements Payable					
0530 Lease-Purchase Obligations					
0540 Accumulated Compensated Absences					
0550 Authority Lease Obligations					
0560 Other Post-Employment Benefits (OPEB)					
0570 Net Pension Liability					
0599 Other Long-Term Liabilities					
<b>Total Noncurrent Liabilities</b>					
<b>Total Liabilities</b>	<b>\$245,963</b>			<b>\$245,963</b>	
0950 Deferred Inflows of Resources					
<b>Net Position</b>					
0791 Invested in Capital Assets, Net of Related Debt	272,464			272,464	
0008 Restricted Net Position (0792 – 0798)					
0799 Unrestricted Net Position	2,154,743			2,154,743	
<b>Total Net Position</b>	<b>\$2,427,207</b>			<b>\$2,427,207</b>	
<b>Total Liabilities And Deferred Inflows Of Resources And Net Position</b>	<b>\$2,673,170</b>			<b>\$2,673,170</b>	

Amounts Expressed in Whole Dollars	<u>Food Service</u> <u>(51)</u>	<u>Child Care Operations</u> <u>(52)</u>	<u>Other Enterprise</u> <u>(58)</u>	<u>TOTAL</u>	<u>Internal Service</u> <u>(60)</u>
<b>Operating Revenues</b>					
6600 Food Service Revenue	242,672			242,672	
0071 Charges for Services					
0072 Other Operating Revenue					
<b>Total Operating Revenues</b>	<b>\$242,672</b>			<b>\$242,672</b>	
<b>Operating Expenses</b>					
100 Personnel Services – Salaries	250,230			250,230	
200 Personnel Services – Employee Benefits	253,577			253,577	
300 Purchased Professional and Technical Services	3,600			3,600	
400 Purchased Property Services	78,305			78,305	
500 Other Purchased Services	1,180,861			1,180,861	
600 Supplies	2,027,303			2,027,303	
740 Depreciation	58,129			58,129	
810 Dues and Fees					
890 Miscellaneous Expenditures					
<b>Total Operating Expenses</b>	<b>\$3,852,005</b>			<b>\$3,852,005</b>	
<b>Operating Income (Loss)</b>	<b>(\$3,609,333)</b>			<b>(\$3,609,333)</b>	
<b>Non Operating Revenues (Expenses)</b>					
6500 Earnings on Investments	4,137			4,137	
6920 Contributions and Donations from Private Sources					
6930 Gains or Losses on Sale of Fixed Assets					
6991 Refunds of a Prior Year Expenditure					
7000 Revenue from State Sources	200,137			200,137	
8000 Revenue from Federal Sources	3,625,110			3,625,110	
820 Claims and Judgments Against the LEA					
830 Interest					
<b>TOTAL Non Operating Revenues (Expenses)</b>	<b>\$3,829,384</b>			<b>\$3,829,384</b>	
<b>Income (Loss) Before Contributions And Transfers</b>	<b>\$220,051</b>			<b>\$220,051</b>	

Amounts Expressed in Whole Dollars	<u>Food Service</u> <u>(51)</u>	<u>Child Care Operations</u> <u>(52)</u>	<u>Other Enterprise</u> <u>(58)</u>	<u>TOTAL</u>	<u>Internal Service</u> <u>(60)</u>
<b>Contributions, Transfers, and Special and Extraordinary Items</b>					
5200 Interfund Transfers – Out					
5300 Transfers Out to Component Units/Primary Governments					
5520 Special Items – Losses					
5530 Extraordinary Items – Losses					
9300 Interfund Transfers - IN					
9500 Capital Contributions					
9700 Transfers IN From Component Units/Primary Governments					
9920 Special Items – Gains					
9930 Extraordinary Items – Gains					
<b>Change In Net Position</b>	<b>\$220,051</b>			<b>\$220,051</b>	
0002 Net Position - Beginning of Fiscal Year	2,207,156			2,207,156	
0003 Accounting Changes / Residual Equity Transfers					
<b>Net Position - End Of Year</b>	<b>\$2,427,207</b>			<b>\$2,427,207</b>	



Amounts Expressed in Whole Dollars	<u>Food Service</u> <u>(51)</u>	<u>Child Care Operations</u> <u>(52)</u>	<u>Other Enterprise</u> <u>(58)</u>	<u>TOTAL</u>	<u>Internal Service(60)</u>
<b>Cash Flows From Operating Activities</b>					
0011 Cash Receipts From Users	232,295			232,295	
0012 Cash Receipts From Assessments Made to Other Funds					
0013 Cash Receipts From Earnings on Investments					
0014 Cash Receipts From Other Operating Revenue	15,686			15,686	
0015 Cash Payments To Employees For Services	503,980			503,980	
0016 Cash Payments For Insurance Claims					
0017 Cash Payments To Suppliers For Goods and Services	3,160,457			3,160,457	
0018 Cash Payments For Other Operating Expenses					
<b>Net Cash Provided By (Used For) Operating Activities</b>	<b>(\$3,416,456)</b>			<b>(\$3,416,456)</b>	
<b>Cash Flows From Non-Capital Financing Activities</b>					
0021 Receipts From Local Sources - 6000					
0022 Receipts From State Sources - 7000	165,006			165,006	
0023 Receipts From Federal Sources -8000	3,413,787			3,413,787	
0024 Notes and Loans Received (Repaid)					
0025 Interest Paid on Notes/Loans - 5100-830					
0026 Operating Transfers In (Out)/Residual Equity Trans					
0027 Operating Transfers In (Out) Primary Government / Comp Unit					
0028 Receipts From Refund of Prior Year Expenditures - 6991					
0029 Special and Extraordinary Gains (losses)					
<b>Net Cash Prov By (Used for) Non-Capital Financing Activities</b>	<b>\$3,578,793</b>			<b>\$3,578,793</b>	
<b>Cash Flows From Capital and Related Financing Activities</b>					
0031 Payments For Fac Acq, Const, and Imp - 4000	124,028			124,028	
0032 Gain / (Loss) on Sale of Fixed Assets - 6930					
0033 Proceeds From Extended Term Financing - 9200					
0034 Principal Paid on Financing Agreements					
0035 Interest Paid on Financing Agreements - 5100-830					
0036 (Inc) Dec in Contributed Capital					
<b>Net Cash Prov By (Used for) Capital and Related Financing Activities</b>	<b>\$124,028</b>			<b>\$124,028</b>	
<b>Cash Flows From Investing Activities</b>					
0041 Earnings on Investments - 6500	4,137			4,137	
0042 Purchase of Inv Securities / Deposits to Inv Pools					
0043 Receipts From Investment Pool Withdrawals					
0044 Proceeds from Sale and Maturity of Inv Securities					
0045 Loans Received (Paid)					
<b>Net Cash Prov By (Used for) Investing Activities</b>	<b>\$4,137</b>			<b>\$4,137</b>	

	<u>Food Service</u> <u>(51)</u>	<u>Child Care Operations</u> <u>(52)</u>	<u>Other Enterprise</u> <u>(58)</u>	<u>TOTAL</u>	<u>Internal Service</u> <u>(60)</u>
<b>Net Increase (Decrease) in Cash Flows</b>	<b>290,502</b>			<b>290,502</b>	
0004 Cash and Cash Equivalents Beginning of Year	1,950,098			1,950,098	
<b>Cash and Cash Equivalents at Year End</b>	<b>\$2,240,600</b>			<b>\$2,240,600</b>	

**Reconciliation of Operating Income (Loss) To Net Cash Provided by (Used For) Operating Activities**

0005 Operating Income (Loss) per REP	(3,609,333)			(3,609,333)	
<b>Adjustments</b>					
0051 Depreciation and Net Amortization	58,129			58,129	
0052 Provision for Uncollectible Accounts					
0053 Other Adjustments					
<b>Effect of Changes in Assets, Liabilities, Deferred Outflows and Deferred Inflows</b>					
0054 (Inc) Dec In Accounts Receivable (0120-0150)	5,309			5,309	
0055 Advances to Other Funds (0160)					
0056 (Inc) Dec in Inventories (0170)	(2,598)			(2,598)	
0057 (Inc) Dec in Prepaid Expenses (0180)	10,855			10,855	
0058 (Inc) Dec in Other Current or Noncurrent Assets					
0064 Deferred Outflows (0910)					
0059 Inc (Dec) in Accounts Payable (0400-0450)	121,355			121,355	
0060 Inc (Dec) in Accrued Salaries/Benefits (0461)	(173)			(173)	
0065 Inc (Dec) in Net Pension Liabilities (0570)					
0066 Inc (Dec) in Other Postemp Benefit Oblig (0560)					
0061 Inc (Dec) in Payroll Deductions/Withholding (0462)					
0062 Inc (Dec) in Unearned Revenue (0480)					
0063 Inc (Dec) in Other Current or Noncurrent Liabilities					
0067 Deferred Inflows (0950)					
<b>Total Adjustments</b>	<b>\$192,877</b>			<b>\$192,877</b>	
<b>Cash Provided By (Used for) Total</b>	<b>(\$3,416,456)</b>			<b>(\$3,416,456)</b>	

COMBINED STATEMENT OF CASH FLOWS  
SCHEDULE OF NONCASH INVESTING, CAPITAL, AND FINANCING ACTIVITIES

Explanation of Transaction and Balance Sheet Effect	Amount
<b>Total</b>	

LEA : 118408852 Wilkes-Barre Area SD

Printed 5/11/2017 10:48:23 AM

Amounts Expressed in Whole Dollars

	<u>Private Purpose Trust</u> <u>(71)</u>	<u>Investment Trust</u> <u>(72)</u>	<u>Pension Trust</u> <u>(73)</u>	<u>Activity</u> <u>(81)</u>
<b>Assets And Deferred Outflows Of Resources</b>				
<b>Assets</b>				
0100 Cash and Cash Equivalents	533,809			375,578
0110 Investments				
0130 Due From Other Funds	167,500			
0147 Due from Component Unit				
0150 Other Receivables				
0170 Inventories				
0180 Prepaid Expenses (Expenditures)				
0190 Other Current Assets				
0220 Buildings and Building Improvements (Net)				
0230 Machinery, Equipment and Furniture (Net)				
<b>Total Assets</b>	<b>\$701,309</b>			<b>\$375,578</b>
0910 Deferred Outflows of Resources				
<b>Total Assets And Deferred Outflows Of Resources</b>	<b>\$701,309</b>			<b>\$375,578</b>

LEA : 118408852 Wilkes-Barre Area SD

Printed 5/11/2017 10:48:23 AM

Amounts Expressed in Whole Dollars

	<u>Other Agency</u> <u>(89)</u>	<u>Discrete Component Units</u> <u>(98)</u>	<u>Discrete Component Units</u> <u>(99)</u>	<u>Total Fiduciary Funds</u>
<b>Assets And Deferred Outflows Of Resources</b>				
<b>Assets</b>				
0100 Cash and Cash Equivalents				909,387
0110 Investments				
0130 Due From Other Funds				167,500
0147 Due from Component Unit				
0150 Other Receivables				
0170 Inventories				
0180 Prepaid Expenses (Expenditures)				
0190 Other Current Assets				
0220 Buildings and Building Improvements (Net)				
0230 Machinery, Equipment and Furniture (Net)				
<b>Total Assets</b>				<b>\$1,076,887</b>
0910 Deferred Outflows of Resources				
<b>Total Assets And Deferred Outflows Of Resources</b>				<b>\$1,076,887</b>

LEA : 118408852 Wilkes-Barre Area SD

Printed 5/11/2017 10:48:23 AM

Amounts Expressed in Whole Dollars	<u>Private Purpose Trust</u> (71)	<u>Investment Trust</u> (72)	<u>Pension Trust</u> (73)	<u>Activity</u> (81)
<b>Liabilities, Deferred Inflows Of Resources And Net Position</b>				
<b>Liabilities</b>				
0400 Due to Other Funds				
0411 Due to Other Governments				
0412 Due to Primary Government				
0413 Due to Component Unit				
0420 Accounts Payable				
0430 Contracts Payable				
0450 Short-Term Payables				
0461 Accrued Salaries and Benefits				
0462 Payroll Deductions and Withholding				
0480 Unearned Revenues				
0490 Other Current Liabilities				375,578
<b>Total Liabilities</b>				<b>\$375,578</b>
0950 Deferred Inflows of Resources				
<b>Net Position</b>				
0791 Invested in Capital Assets, Net of Related Debt				
0009 Restricted Net Position (0792 – 0798)	701,309			
0799 Unrestricted Net Position				
<b>Total Net Position</b>	<b>\$701,309</b>			
<b>Total Liabilities, Deferred Inflows Of Resources And Net Position</b>	<b>\$701,309</b>			<b>\$375,578</b>

LEA : 118408852 Wilkes-Barre Area SD

Printed 5/11/2017 10:48:23 AM

Amounts Expressed in Whole Dollars	<u>Other Agency</u> (89)	<u>Discrete Component Units</u> (98)	<u>Discrete Component Units</u> (99)	<u>Total Fiduciary Funds</u>
<b>Liabilities, Deferred Inflows Of Resources And Net Position</b>				
<b>Liabilities</b>				
0400 Due to Other Funds				
0411 Due to Other Governments				
0412 Due to Primary Government				
0413 Due to Component Unit				
0420 Accounts Payable				
0430 Contracts Payable				
0450 Short-Term Payables				
0461 Accrued Salaries and Benefits				
0462 Payroll Deductions and Withholding				
0480 Unearned Revenues				
0490 Other Current Liabilities				375,578
<b>Total Liabilities</b>				<b>\$375,578</b>
0950 Deferred Inflows of Resources				
<b>Net Position</b>				
0791 Invested in Capital Assets, Net of Related Debt				
0009 Restricted Net Position (0792 – 0798)				701,309
0799 Unrestricted Net Position				
<b>Total Net Position</b>				<b>\$701,309</b>
<b>Total Liabilities, Deferred Inflows Of Resources And Net Position</b>				<b>\$1,076,887</b>

Amounts Expressed in Whole Dollars	<u>Private Purpose Trust</u> (71)	<u>Investment Trust</u> (72)	<u>Pension Trust</u> (73)	<u>Discrete Component</u> <u>Units</u> (98)	<u>Discrete Component</u> <u>Units</u> (99)	<u>Total Fiduciary</u> <u>Funds</u>
<b>Additions</b>						
0091 Gifts and Contributions						
0092 Other Additions	73,064					73,064
<b>Deductions</b>						
0093 Scholarships Awarded						
0094 Other Deductions	30,000					30,000
<b>Change In Net Position</b>	<b>\$43,064</b>					<b>\$43,064</b>
0006 Net Position – Beginning of Fiscal Year	658,245					658,245
0007 Net Position Held in Trust for Pension Benefits						
<b>Net Position - End of Fiscal Year</b>	<b>\$701,309</b>					<b>\$701,309</b>



	<u>Revenue Reported In Current Year</u>	<u>Current Year Tax Accrual</u>	<u>Prior Year Tax Accrual</u>	<u>Taxes Collected In Current Year</u>
<b><u>Revenue from Local Sources</u></b>				
6111 Current Real Estate Taxes	42,887,615.43			42,887,615.43
6113 Public Utility Realty Taxes	61,317.40			61,317.40
6114 Payments in Lieu of Current Taxes - State / Local	2,108,191.18			2,108,191.18
6141 Current Act 511 Per Capita Taxes	79,737.12	1,987.90	517.00	78,266.22
6143 Current Act 511 Local Services Taxes	206,218.80	23,897.66	26,646.82	208,967.96
6151 Current Act 511 Earned Income Taxes	4,972,208.65	1,046,931.45	854,847.89	4,780,125.09
6153 Current Act 511 Real Estate Transfer Taxes	642,513.87	32,755.28	213,305.22	823,063.81
6155 Current Act 511 Business Privilege Taxes	1,134,697.64	31,842.12	100,475.89	1,203,331.41
6157 Current Act 511 Mercantile Taxes	1,289,175.08	17,248.47	33,423.25	1,305,349.86
6411 Delinquent Real Estate Taxes	4,605,318.82	1,492,624.05	1,002,331.65	4,115,026.42
6500 Earnings on Investments	78,810.17			
6700 Revenues from LEA Activities	57,432.67			
6832 Federal IDEA Revenue Received as Pass Through	864,330.00			
6836 Federal ARRA Race to the Top Revenue Received as Pass Through	374,645.26			
6910 Rentals	69,611.45			
6920 Contributions and Donations from Private Sources	1,400.00			
6941 Regular Day School Tuition	42,107.00			
6944 Receipts from Other LEAs in Pennsylvania - Education	169,014.00			
6999 Other Revenues Not Specified Above	70,540.45			
<b>TOTAL Revenue from Local Sources</b>	<b>\$59,714,884.99</b>	<b>\$2,647,286.93</b>	<b>\$2,231,547.72</b>	<b>\$57,571,254.78</b>

**Revenue Reported  
In Current Year**

**Revenue from State Sources**

7110 Basic Education Funding	25,208,461.96		
7160 Tuition for Orphans Subsidy	80,546.96		
7271 Special Education funds for School-Aged Pupils	4,306,505.18		
7311 Pupil Transportation Subsidy	1,231,409.18		
7320 Rental and Sinking Fund Payments / Building Reimbursement Subsidy	242,411.15		
7330 Health Services (Medical, Dental, Nurse, Act 25)	149,765.83		
7340 State Property Tax Reduction Allocation	2,882,962.19		
7360 Safe Schools	77,681.00		
7505 Ready to Learn Block Grant	1,125,250.00		
7810 State Share of Social Security and Medicare Taxes	2,168,849.77		
7820 State Share of Retirement Contributions	8,051,511.70		
7990 Other Technology Grants	3,554.79		
<b>TOTAL Revenue from State Sources</b>	<b>\$45,528,909.71</b>		

	<b>Revenue Reported In Current Year</b>			
<b>Revenue from Federal Sources</b>				
8514 NCLB, Title I - Improving the Academic Achievement of the Disadvantaged	3,916,046.86			
8515 NCLB, Title II - Preparing, Training and Recruiting High Quality Teachers and Principals	394,305.99			
8516 NCLB, Title III - Language Instruction for Limited English Proficient and Immigrant Students	124,820.95			
8810 School-Based Access Medicaid Reimbursement Program (SBAP) Reimbursements (Access)	50,542.44			
8820 Medical Assistance Reimbursement for Administrative Claiming (Quarterly) Program	126,553.71			
<b>TOTAL Revenue from Federal Sources</b>	<b>\$4,612,269.95</b>			
<b>TOTAL FROM ALL SOURCES</b>	<b>\$109,856,064.65</b>	<b>\$2,647,286.93</b>	<b>\$2,231,547.72</b>	<b>\$57,571,254.78</b>

Revenue from Local Sources	59,714,884.99
Revenue from State Sources	45,528,909.71
Revenue from Federal Sources	4,612,269.95
Other Financing Sources	
<b>TOTAL FROM ALL SOURCES</b>	<b>\$109,856,064.65</b>

**General Fund (10)**

	<u>Total</u>
<b>1000 Instruction</b>	
<b>100 Personnel Services – Salaries</b>	
100 Personnel Services – Salaries	37,587,676.92
<b>Total Personnel Services – Salaries</b>	<b>\$37,587,676.92</b>
<b>200 Personnel Services – Employee Benefits</b>	
210 Group Insurance – Contracted Provider	9,829,036.36
220 Social Security Contributions	2,831,148.82
230 PSERS Retirement Contributions	9,610,904.15
250 Unemployment Compensation	34,771.65
260 Workers’ Compensation	257,096.79
<b>Total Personnel Services – Employee Benefits</b>	<b>\$22,562,957.77</b>
<b>300 Purchased Professional and Technical Services</b>	
322 Professional Educational Services – Ius	2,060,655.98
323 Professional Educational Services – Other Educational Agencies	3,467.00
329 Professional Educational Services – Other	26,438.98
330 Other Professional Services	193,164.01
390 Other Purchased Professional and Technical Services	15,100.00
<b>Total Purchased Professional and Technical Services</b>	<b>\$2,298,825.97</b>
<b>400 Purchased Property Services</b>	
430 Repairs and Maintenance Services	13,807.18
440 Rentals	1,025,367.56
<b>Total Purchased Property Services</b>	<b>\$1,039,174.74</b>
<b>500 Other Purchased Services</b>	
510 Student Transportation Services	73,266.50
530 Communications	40,653.06
561 Tuition To Other School Districts Within the State	1,264,489.24
562 Tuition To Pennsylvania Charter Schools	7,276,154.46
564 Tuition To Career and Technology Centers	3,038,421.00
567 Tuition To Approved Private Schools (APS) and PA Chartered Schools for the Deaf and Blind	40,733.34
568 Tuition To Private Residential Rehabilitative Institutions (PRRI) [In-State] and Detention Centers	1,191,915.42
580 Travel	24,246.15
594 IU Payment By Withholding for Institutionalized Children’s Programs – Special Classes	968,384.86
<b>Total Other Purchased Services</b>	<b>\$13,918,264.03</b>
<b>600 Supplies</b>	
610 General Supplies	1,221,217.87
640 Books and Periodicals	121,110.25
<b>Total Supplies</b>	<b>\$1,342,328.12</b>
<b>800 Other Objects</b>	
810 Dues and Fees	500.00
<b>Total Other Objects</b>	<b>\$500.00</b>
<b>Total 1000 Instruction</b>	<b>\$78,749,727.55</b>

LEA : 118408852 Wilkes-Barre Area SD

Printed 5/11/2017 10:48:26 AM

Page - 2 of 21

**General Fund (10)****1100 Regular Programs – Elementary / Secondary**

	<u>Elementary</u>	<u>Secondary</u>	<u>Federal</u>	<u>Total</u>
<b>100 Personnel Services – Salaries</b>				
100 Personnel Services – Salaries	12,946,776.64	13,902,747.55	2,324,140.72	29,173,664.91
<b>Total Personnel Services – Salaries</b>	<b>\$12,946,776.64</b>	<b>\$13,902,747.55</b>	<b>\$2,324,140.72</b>	<b>\$29,173,664.91</b>
<b>200 Personnel Services – Employee Benefits</b>				
210 Group Insurance – Contracted Provider	3,410,488.54	3,420,296.56	575,562.83	7,406,347.93
220 Social Security Contributions	975,526.29	1,047,984.31	177,810.52	2,201,321.12
230 PSERS Retirement Contributions	3,548,350.55	3,612,521.08	313,338.05	7,474,209.68
250 Unemployment Compensation	13,458.46	13,458.46		26,916.92
260 Workers' Compensation	88,688.44	95,136.37	16,060.33	199,885.14
<b>Total Personnel Services – Employee Benefits</b>	<b>\$8,036,512.28</b>	<b>\$8,189,396.78</b>	<b>\$1,082,771.73</b>	<b>\$17,308,680.79</b>
<b>300 Purchased Professional and Technical Services</b>				
323 Professional Educational Services – Other Educational Agencies	1,733.50	1,733.50		3,467.00
329 Professional Educational Services – Other			26,438.98	26,438.98
330 Other Professional Services		485.76		485.76
<b>Total Purchased Professional and Technical Services</b>	<b>\$1,733.50</b>	<b>\$2,219.26</b>	<b>\$26,438.98</b>	<b>\$30,391.74</b>
<b>400 Purchased Property Services</b>				
430 Repairs and Maintenance Services	7,260.45	6,546.73		13,807.18
440 Rentals	494,756.93	530,610.63		1,025,367.56
<b>Total Purchased Property Services</b>	<b>\$502,017.38</b>	<b>\$537,157.36</b>		<b>\$1,039,174.74</b>
<b>500 Other Purchased Services</b>				
510 Student Transportation Services	28,874.02	44,392.48		73,266.50
530 Communications	20,326.53	20,326.53		40,653.06
561 Tuition To Other School Districts Within the State	133,322.00	140,980.09		274,302.09
562 Tuition To Pennsylvania Charter Schools	2,448,416.52	2,448,416.51		4,896,833.03
568 Tuition To Private Residential Rehabilitative Institutions (PRRI) [In-State] and Detention Centers	59,622.41	59,622.40		119,244.81
580 Travel	10,416.30	11,607.82		22,024.12
<b>Total Other Purchased Services</b>	<b>\$2,700,977.78</b>	<b>\$2,725,345.83</b>		<b>\$5,426,323.61</b>
<b>600 Supplies</b>				
610 General Supplies	159,103.24	191,367.75	779,434.61	1,129,905.60
640 Books and Periodicals	45,402.34	5,609.50	19,547.39	70,559.23
<b>Total Supplies</b>	<b>\$204,505.58</b>	<b>\$196,977.25</b>	<b>\$798,982.00</b>	<b>\$1,200,464.83</b>
<b>800 Other Objects</b>				
810 Dues and Fees	250.00	250.00		500.00
<b>Total Other Objects</b>	<b>\$250.00</b>	<b>\$250.00</b>		<b>\$500.00</b>
<b>Total 1100 Regular Programs – Elementary / Secondary</b>	<b>\$24,392,773.16</b>	<b>\$25,554,094.03</b>	<b>\$4,232,333.43</b>	<b>\$54,179,200.62</b>

**General Fund (10)**

**1110 Regular Programs**

	<u>Elementary</u>	<u>Secondary</u>	<u>Federal</u>	<u>Total</u>
<b>100 Personnel Services – Salaries</b>				
100 Personnel Services – Salaries	12,946,776.64	13,902,747.55	327,633.92	27,177,158.11
<b>Total Personnel Services – Salaries</b>	<b>\$12,946,776.64</b>	<b>\$13,902,747.55</b>	<b>\$327,633.92</b>	<b>\$27,177,158.11</b>
<b>200 Personnel Services – Employee Benefits</b>				
210 Group Insurance – Contracted Provider	3,410,488.54	3,420,296.56	91,705.41	6,922,490.51
220 Social Security Contributions	975,526.29	1,047,984.31	25,063.99	2,048,574.59
230 PSERS Retirement Contributions	3,548,350.55	3,612,521.08	31,998.37	7,192,870.00
250 Unemployment Compensation	13,458.46	13,458.46		26,916.92
260 Workers' Compensation	88,688.44	95,136.37	2,194.49	186,019.30
<b>Total Personnel Services – Employee Benefits</b>	<b>\$8,036,512.28</b>	<b>\$8,189,396.78</b>	<b>\$150,962.26</b>	<b>\$16,376,871.32</b>
<b>300 Purchased Professional and Technical Services</b>				
323 Professional Educational Services – Other Educational Agencies	1,733.50	1,733.50		3,467.00
330 Other Professional Services		485.76		485.76
<b>Total Purchased Professional and Technical Services</b>	<b>\$1,733.50</b>	<b>\$2,219.26</b>		<b>\$3,952.76</b>
<b>400 Purchased Property Services</b>				
430 Repairs and Maintenance Services	7,260.45	6,546.73		13,807.18
440 Rentals	494,756.93	530,610.63		1,025,367.56
<b>Total Purchased Property Services</b>	<b>\$502,017.38</b>	<b>\$537,157.36</b>		<b>\$1,039,174.74</b>
<b>500 Other Purchased Services</b>				
510 Student Transportation Services	28,874.02	44,392.48		73,266.50
530 Communications	20,326.53	20,326.53		40,653.06
561 Tuition To Other School Districts Within the State	133,322.00	140,980.09		274,302.09
562 Tuition To Pennsylvania Charter Schools	2,448,416.52	2,448,416.51		4,896,833.03
568 Tuition To Private Residential Rehabilitative Institutions (PRRI) [In-State] and Detention Centers	59,622.41	59,622.40		119,244.81
580 Travel	10,416.30	11,607.82		22,024.12
<b>Total Other Purchased Services</b>	<b>\$2,700,977.78</b>	<b>\$2,725,345.83</b>		<b>\$5,426,323.61</b>
<b>600 Supplies</b>				
610 General Supplies	159,103.24	191,367.75	720,753.82	1,071,224.81
640 Books and Periodicals	45,402.34	5,609.50	19,547.39	70,559.23
<b>Total Supplies</b>	<b>\$204,505.58</b>	<b>\$196,977.25</b>	<b>\$740,301.21</b>	<b>\$1,141,784.04</b>
<b>800 Other Objects</b>				
810 Dues and Fees	250.00	250.00		500.00
<b>Total Other Objects</b>	<b>\$250.00</b>	<b>\$250.00</b>		<b>\$500.00</b>
<b>Total 1110 Regular Programs</b>	<b>\$24,392,773.16</b>	<b>\$25,554,094.03</b>	<b>\$1,218,897.39</b>	<b>\$51,165,764.58</b>

**General Fund (10)**

	<u>Elementary</u>	<u>Secondary</u>	<u>Federal</u>	<u>Total</u>
<b>1190 Federally-Funded Regular Programs</b>				
<b>100 Personnel Services – Salaries</b>				
100 Personnel Services – Salaries			1,996,506.80	1,996,506.80
<b>Total Personnel Services – Salaries</b>			<b>\$1,996,506.80</b>	<b>\$1,996,506.80</b>
<b>200 Personnel Services – Employee Benefits</b>				
210 Group Insurance – Contracted Provider			483,857.42	483,857.42
220 Social Security Contributions			152,746.53	152,746.53
230 PSERS Retirement Contributions			281,339.68	281,339.68
260 Workers' Compensation			13,865.84	13,865.84
<b>Total Personnel Services – Employee Benefits</b>			<b>\$931,809.47</b>	<b>\$931,809.47</b>
<b>300 Purchased Professional and Technical Services</b>				
329 Professional Educational Services – Other			26,438.98	26,438.98
<b>Total Purchased Professional and Technical Services</b>			<b>\$26,438.98</b>	<b>\$26,438.98</b>
<b>600 Supplies</b>				
610 General Supplies			58,680.79	58,680.79
<b>Total Supplies</b>			<b>\$58,680.79</b>	<b>\$58,680.79</b>
<b>Total 1190 Federally-Funded Regular Programs</b>			<b>\$3,013,436.04</b>	<b>\$3,013,436.04</b>



**General Fund (10)**

**1200 Special Programs – Elementary / Secondary**

	<u>Elementary</u>	<u>Secondary</u>	<u>Federal</u>	<u>Total</u>
<b>100 Personnel Services – Salaries</b>				
100 Personnel Services – Salaries	3,882,406.83	2,801,429.38	635,718.44	7,319,554.65
<b>Total Personnel Services – Salaries</b>	<b>\$3,882,406.83</b>	<b>\$2,801,429.38</b>	<b>\$635,718.44</b>	<b>\$7,319,554.65</b>
<b>200 Personnel Services – Employee Benefits</b>				
210 Group Insurance – Contracted Provider	1,291,846.15	986,192.30		2,278,038.45
220 Social Security Contributions	316,097.88	235,349.02		551,446.90
230 PSERS Retirement Contributions	1,083,426.78	790,758.37		1,874,185.15
250 Unemployment Compensation	3,521.75	3,328.56		6,850.31
260 Workers' Compensation	28,734.47	21,365.38		50,099.85
<b>Total Personnel Services – Employee Benefits</b>	<b>\$2,723,627.03</b>	<b>\$2,036,993.63</b>		<b>\$4,760,620.66</b>
<b>300 Purchased Professional and Technical Services</b>				
322 Professional Educational Services – lus	786,700.50	786,700.48	41,093.00	1,614,493.98
330 Other Professional Services	96,339.13	96,339.12		192,678.25
<b>Total Purchased Professional and Technical Services</b>	<b>\$883,039.63</b>	<b>\$883,039.60</b>	<b>\$41,093.00</b>	<b>\$1,807,172.23</b>
<b>500 Other Purchased Services</b>				
561 Tuition To Other School Districts Within the State	127,107.36	147,307.75		274,415.11
562 Tuition To Pennsylvania Charter Schools	1,189,660.72	1,189,660.71		2,379,321.43
567 Tuition To Approved Private Schools (APS) and PA Chartered Schools for the Deaf and Blind	20,366.67	20,366.67		40,733.34
568 Tuition To Private Residential Rehabilitative Institutions (PRRI) [In-State] and Detention Centers	536,335.31	536,335.30		1,072,670.61
580 Travel	1,908.87	313.16		2,222.03
594 IU Payment By Withholding for Institutionalized Children’s Programs – Special Classes	2,252.07	966,132.79		968,384.86
<b>Total Other Purchased Services</b>	<b>\$1,877,631.00</b>	<b>\$2,860,116.38</b>		<b>\$4,737,747.38</b>
<b>600 Supplies</b>				
610 General Supplies	54,475.35	26,623.26		81,098.61
640 Books and Periodicals	34,842.19	15,708.83		50,551.02
<b>Total Supplies</b>	<b>\$89,317.54</b>	<b>\$42,332.09</b>		<b>\$131,649.63</b>
<b>Total 1200 Special Programs – Elementary / Secondary</b>	<b>\$9,456,022.03</b>	<b>\$8,623,911.08</b>	<b>\$676,811.44</b>	<b>\$18,756,744.55</b>

**General Fund (10)**

**1210 Life Skills Support**

	<u>Elementary</u>	<u>Secondary</u>	<u>Federal</u>	<u>Total</u>
<b>100 Personnel Services – Salaries</b>				
100 Personnel Services – Salaries	492,215.66	294,830.04		787,045.70
<b>Total Personnel Services – Salaries</b>	<b>\$492,215.66</b>	<b>\$294,830.04</b>		<b>\$787,045.70</b>
<b>200 Personnel Services – Employee Benefits</b>				
210 Group Insurance – Contracted Provider	199,797.78	128,447.69		328,245.47
220 Social Security Contributions	37,656.50	22,554.54		60,211.04
230 PSERS Retirement Contributions	135,177.47	75,770.79		210,948.26
250 Unemployment Compensation	378.14	378.14		756.28
260 Workers' Compensation	3,430.86	2,047.53		5,478.39
<b>Total Personnel Services – Employee Benefits</b>	<b>\$376,440.75</b>	<b>\$229,198.69</b>		<b>\$605,639.44</b>
<b>300 Purchased Professional and Technical Services</b>				
322 Professional Educational Services – lus	186,950.00	186,950.00		373,900.00
330 Other Professional Services	2,010.00	2,010.00		4,020.00
<b>Total Purchased Professional and Technical Services</b>	<b>\$188,960.00</b>	<b>\$188,960.00</b>		<b>\$377,920.00</b>
<b>600 Supplies</b>				
610 General Supplies	5,715.52	4,146.92		9,862.44
640 Books and Periodicals	16,927.61			16,927.61
<b>Total Supplies</b>	<b>\$22,643.13</b>	<b>\$4,146.92</b>		<b>\$26,790.05</b>
<b>Total 1210 Life Skills Support</b>	<b>\$1,080,259.54</b>	<b>\$717,135.65</b>		<b>\$1,797,395.19</b>

**General Fund (10)**

**1220 Sensory Support**

	<u>Elementary</u>	<u>Secondary</u>	<u>Federal</u>	<u>Total</u>
<b>100 Personnel Services – Salaries</b>				
100 Personnel Services – Salaries	291,627.34	177,380.12		469,007.46
<b>Total Personnel Services – Salaries</b>	<b>\$291,627.34</b>	<b>\$177,380.12</b>		<b>\$469,007.46</b>
<b>200 Personnel Services – Employee Benefits</b>				
210 Group Insurance – Contracted Provider	77,275.40	42,426.97		119,702.37
220 Social Security Contributions	22,314.13	13,570.09		35,884.22
230 PSERS Retirement Contributions	75,371.83	45,837.13		121,208.96
250 Unemployment Compensation	220.54	220.53		441.07
260 Workers' Compensation	2,025.48	1,231.84		3,257.32
<b>Total Personnel Services – Employee Benefits</b>	<b>\$177,207.38</b>	<b>\$103,286.56</b>		<b>\$280,493.94</b>
<b>300 Purchased Professional and Technical Services</b>				
322 Professional Educational Services – lus	114,505.00	114,505.00	41,093.00	270,103.00
330 Other Professional Services	151.13	151.12		302.25
<b>Total Purchased Professional and Technical Services</b>	<b>\$114,656.13</b>	<b>\$114,656.12</b>	<b>\$41,093.00</b>	<b>\$270,405.25</b>
<b>500 Other Purchased Services</b>				
580 Travel	313.16	313.16		626.32
<b>Total Other Purchased Services</b>	<b>\$313.16</b>	<b>\$313.16</b>		<b>\$626.32</b>
<b>600 Supplies</b>				
610 General Supplies	2,870.32	1,404.12		4,274.44
640 Books and Periodicals		3,824.03		3,824.03
<b>Total Supplies</b>	<b>\$2,870.32</b>	<b>\$5,228.15</b>		<b>\$8,098.47</b>
<b>Total 1220 Sensory Support</b>	<b>\$586,674.33</b>	<b>\$400,864.11</b>	<b>\$41,093.00</b>	<b>\$1,028,631.44</b>

**General Fund (10)**

**1230 Emotional Support**

	<u>Elementary</u>	<u>Secondary</u>	<u>Federal</u>	<u>Total</u>
<b>100 Personnel Services – Salaries</b>				
100 Personnel Services – Salaries	1,014,740.20	244,042.89	50,542.44	1,309,325.53
<b>Total Personnel Services – Salaries</b>	<b>\$1,014,740.20</b>	<b>\$244,042.89</b>	<b>\$50,542.44</b>	<b>\$1,309,325.53</b>
<b>200 Personnel Services – Employee Benefits</b>				
210 Group Insurance – Contracted Provider	345,505.20	136,198.69		481,703.89
220 Social Security Contributions	77,630.77	22,539.33		100,170.10
230 PSERS Retirement Contributions	257,463.83	75,844.48		333,308.31
250 Unemployment Compensation	525.86	525.86		1,051.72
260 Workers' Compensation	7,047.49	2,046.32		9,093.81
<b>Total Personnel Services – Employee Benefits</b>	<b>\$688,173.15</b>	<b>\$237,154.68</b>		<b>\$925,327.83</b>
<b>300 Purchased Professional and Technical Services</b>				
322 Professional Educational Services – lus	273,247.17	273,247.16		546,494.33
330 Other Professional Services	37,534.00	37,534.00		75,068.00
<b>Total Purchased Professional and Technical Services</b>	<b>\$310,781.17</b>	<b>\$310,781.16</b>		<b>\$621,562.33</b>
<b>500 Other Purchased Services</b>				
568 Tuition To Private Residential Rehabilitative Institutions (PRRI) [In-State] and Detention Centers	536,335.31	536,335.30		1,072,670.61
<b>Total Other Purchased Services</b>	<b>\$536,335.31</b>	<b>\$536,335.30</b>		<b>\$1,072,670.61</b>
<b>600 Supplies</b>				
610 General Supplies	5,820.08	4,858.20		10,678.28
<b>Total Supplies</b>	<b>\$5,820.08</b>	<b>\$4,858.20</b>		<b>\$10,678.28</b>
<b>Total 1230 Emotional Support</b>	<b>\$2,555,849.91</b>	<b>\$1,333,172.23</b>	<b>\$50,542.44</b>	<b>\$3,939,564.58</b>

**General Fund (10)**

**1240 Academic Support**

	<u>Elementary</u>	<u>Secondary</u>	<u>Federal</u>	<u>Total</u>
<b>100 Personnel Services – Salaries</b>				
100 Personnel Services – Salaries	2,083,823.63	2,085,176.33	585,176.00	4,754,175.96
<b>Total Personnel Services – Salaries</b>	<b>\$2,083,823.63</b>	<b>\$2,085,176.33</b>	<b>\$585,176.00</b>	<b>\$4,754,175.96</b>
<b>200 Personnel Services – Employee Benefits</b>				
210 Group Insurance – Contracted Provider	669,267.77	679,118.95		1,348,386.72
220 Social Security Contributions	178,496.48	176,685.06		355,181.54
230 PSERS Retirement Contributions	615,413.65	593,305.97		1,208,719.62
250 Unemployment Compensation	2,397.21	2,204.03		4,601.24
260 Workers' Compensation	16,230.64	16,039.69		32,270.33
<b>Total Personnel Services – Employee Benefits</b>	<b>\$1,481,805.75</b>	<b>\$1,467,353.70</b>		<b>\$2,949,159.45</b>
<b>300 Purchased Professional and Technical Services</b>				
330 Other Professional Services	56,644.00	56,644.00		113,288.00
<b>Total Purchased Professional and Technical Services</b>	<b>\$56,644.00</b>	<b>\$56,644.00</b>		<b>\$113,288.00</b>
<b>500 Other Purchased Services</b>				
562 Tuition To Pennsylvania Charter Schools	1,189,660.72	1,189,660.71		2,379,321.43
580 Travel	1,595.71			1,595.71
<b>Total Other Purchased Services</b>	<b>\$1,191,256.43</b>	<b>\$1,189,660.71</b>		<b>\$2,380,917.14</b>
<b>600 Supplies</b>				
610 General Supplies	31,851.93	7,996.52		39,848.45
640 Books and Periodicals	17,914.58	11,884.80		29,799.38
<b>Total Supplies</b>	<b>\$49,766.51</b>	<b>\$19,881.32</b>		<b>\$69,647.83</b>
<b>Total 1240 Academic Support</b>	<b>\$4,863,296.32</b>	<b>\$4,818,716.06</b>	<b>\$585,176.00</b>	<b>\$10,267,188.38</b>

**General Fund (10)**

	<u>Elementary</u>	<u>Secondary</u>	<u>Federal</u>	<u>Total</u>
<b>1241 Learning Support – Public</b>				
<b>100 Personnel Services – Salaries</b>				
100 Personnel Services – Salaries	1,448,436.96	1,794,260.49	585,176.00	3,827,873.45
<b>Total Personnel Services – Salaries</b>	<b>\$1,448,436.96</b>	<b>\$1,794,260.49</b>	<b>\$585,176.00</b>	<b>\$3,827,873.45</b>
<b>200 Personnel Services – Employee Benefits</b>				
210 Group Insurance – Contracted Provider	535,530.29	618,730.29		1,154,260.58
220 Social Security Contributions	129,888.94	154,429.88		284,318.82
230 PSERS Retirement Contributions	451,888.56	518,505.47		970,394.03
250 Unemployment Compensation	1,844.48	1,779.62		3,624.10
260 Workers' Compensation	11,818.31	14,019.26		25,837.57
<b>Total Personnel Services – Employee Benefits</b>	<b>\$1,130,970.58</b>	<b>\$1,307,464.52</b>		<b>\$2,438,435.10</b>
<b>300 Purchased Professional and Technical Services</b>				
330 Other Professional Services	56,644.00	56,644.00		113,288.00
<b>Total Purchased Professional and Technical Services</b>	<b>\$56,644.00</b>	<b>\$56,644.00</b>		<b>\$113,288.00</b>
<b>500 Other Purchased Services</b>				
562 Tuition To Pennsylvania Charter Schools	1,189,660.72	1,189,660.71		2,379,321.43
580 Travel	1,595.71			1,595.71
<b>Total Other Purchased Services</b>	<b>\$1,191,256.43</b>	<b>\$1,189,660.71</b>		<b>\$2,380,917.14</b>
<b>600 Supplies</b>				
610 General Supplies	29,012.90	7,996.52		37,009.42
640 Books and Periodicals	17,914.58	11,884.80		29,799.38
<b>Total Supplies</b>	<b>\$46,927.48</b>	<b>\$19,881.32</b>		<b>\$66,808.80</b>
<b>Total 1241 Learning Support – Public</b>	<b>\$3,874,235.45</b>	<b>\$4,367,911.04</b>	<b>\$585,176.00</b>	<b>\$8,827,322.49</b>

**General Fund (10)**

	<u>Elementary</u>	<u>Secondary</u>	<u>Federal</u>	<u>Total</u>
<b>1243 Gifted Support</b>				
<b>100 Personnel Services – Salaries</b>				
100 Personnel Services – Salaries	635,386.67	290,915.84		926,302.51
<b>Total Personnel Services – Salaries</b>	<b>\$635,386.67</b>	<b>\$290,915.84</b>		<b>\$926,302.51</b>
<b>200 Personnel Services – Employee Benefits</b>				
210 Group Insurance – Contracted Provider	133,737.48	60,388.66		194,126.14
220 Social Security Contributions	48,607.54	22,255.18		70,862.72
230 PSERS Retirement Contributions	163,525.09	74,800.50		238,325.59
250 Unemployment Compensation	552.73	424.41		977.14
260 Workers' Compensation	4,412.33	2,020.43		6,432.76
<b>Total Personnel Services – Employee Benefits</b>	<b>\$350,835.17</b>	<b>\$159,889.18</b>		<b>\$510,724.35</b>
<b>600 Supplies</b>				
610 General Supplies	2,839.03			2,839.03
<b>Total Supplies</b>	<b>\$2,839.03</b>			<b>\$2,839.03</b>
<b>Total 1243 Gifted Support</b>	<b>\$989,060.87</b>	<b>\$450,805.02</b>		<b>\$1,439,865.89</b>

General Fund (10)

1270 Multi-Handicapped Support

300 Purchased Professional and Technical Services

	<u>Elementary</u>	<u>Secondary</u>	<u>Federal</u>	<u>Total</u>
322 Professional Educational Services – lus	206,148.33	206,148.32		412,296.65
<b>Total Purchased Professional and Technical Services</b>	<b>\$206,148.33</b>	<b>\$206,148.32</b>		<b>\$412,296.65</b>

600 Supplies

610 General Supplies	8,217.50	8,217.50		16,435.00
<b>Total Supplies</b>	<b>\$8,217.50</b>	<b>\$8,217.50</b>		<b>\$16,435.00</b>
<b>Total 1270 Multi-Handicapped Support</b>	<b>\$214,365.83</b>	<b>\$214,365.82</b>		<b>\$428,731.65</b>



**General Fund (10)**

	<u>Elementary</u>	<u>Secondary</u>	<u>Federal</u>	<u>Total</u>
<b>1290 Special Programs - Other Support</b>				
<b>300 <u>Purchased Professional and Technical Services</u></b>				
322 Professional Educational Services – Ius	5,850.00	5,850.00		11,700.00
<b>Total Purchased Professional and Technical Services</b>	<b>\$5,850.00</b>	<b>\$5,850.00</b>		<b>\$11,700.00</b>
<b>500 <u>Other Purchased Services</u></b>				
561 Tuition To Other School Districts Within the State	127,107.36	147,307.75		274,415.11
567 Tuition To Approved Private Schools (APS) and PA Chartered Schools for the Deaf and Blind	20,366.67	20,366.67		40,733.34
594 IU Payment By Withholding for Institutionalized Children’s Programs – Special Classes	2,252.07	966,132.79		968,384.86
<b>Total Other Purchased Services</b>	<b>\$149,726.10</b>	<b>\$1,133,807.21</b>		<b>\$1,283,533.31</b>
<b>Total 1290 Special Programs - Other Support</b>	<b>\$155,576.10</b>	<b>\$1,139,657.21</b>		<b>\$1,295,233.31</b>

**General Fund (10)**

**1300 Vocational Education**

**100 Personnel Services – Salaries**

	<u>Elementary</u>	<u>Secondary</u>	<u>Federal</u>	<u>Total</u>
100 Personnel Services – Salaries		791,636.86		791,636.86

<b>Total Personnel Services – Salaries</b>		<b>\$791,636.86</b>		<b>\$791,636.86</b>
--	--	---------------------	--	---------------------

**200 Personnel Services – Employee Benefits**

210 Group Insurance – Contracted Provider		136,329.82		136,329.82
---	--	------------	--	------------

220 Social Security Contributions		55,214.97		55,214.97
-----------------------------------	--	-----------	--	-----------

230 PSERS Retirement Contributions		185,134.52		185,134.52
------------------------------------	--	------------	--	------------

250 Unemployment Compensation		727.06		727.06
-------------------------------	--	--------	--	--------

260 Workers' Compensation		5,008.87		5,008.87
---------------------------	--	----------	--	----------

<b>Total Personnel Services – Employee Benefits</b>		<b>\$382,415.24</b>		<b>\$382,415.24</b>
---	--	---------------------	--	---------------------

**500 Other Purchased Services**

564 Tuition To Career and Technology Centers		3,038,421.00		3,038,421.00
--	--	--------------	--	--------------

<b>Total Other Purchased Services</b>		<b>\$3,038,421.00</b>		<b>\$3,038,421.00</b>
---------------------------------------	--	-----------------------	--	-----------------------

**600 Supplies**

610 General Supplies		6,207.72		6,207.72
----------------------	--	----------	--	----------

<b>Total Supplies</b>		<b>\$6,207.72</b>		<b>\$6,207.72</b>
-----------------------	--	-------------------	--	-------------------

<b>Total 1300 Vocational Education</b>		<b>\$4,218,680.82</b>		<b>\$4,218,680.82</b>
--	--	-----------------------	--	-----------------------

**General Fund (10)**

	<u>Elementary</u>	<u>Secondary</u>	<u>Federal</u>	<u>Total</u>
<b>1400 Other Instructional Programs – Elementary / Secondary</b>				
<b>100 Personnel Services – Salaries</b>				
100 Personnel Services – Salaries	15,658.02	287,162.48		302,820.50
<b>Total Personnel Services – Salaries</b>	<b>\$15,658.02</b>	<b>\$287,162.48</b>		<b>\$302,820.50</b>
<b>200 Personnel Services – Employee Benefits</b>				
210 Group Insurance – Contracted Provider		8,320.16		8,320.16
220 Social Security Contributions	1,197.84	21,967.99		23,165.83
230 PSERS Retirement Contributions	4,046.04	73,328.76		77,374.80
250 Unemployment Compensation		277.36		277.36
260 Workers' Compensation	108.73	1,994.20		2,102.93
<b>Total Personnel Services – Employee Benefits</b>	<b>\$5,352.61</b>	<b>\$105,888.47</b>		<b>\$111,241.08</b>
<b>300 Purchased Professional and Technical Services</b>				
322 Professional Educational Services – lus		446,162.00		446,162.00
390 Other Purchased Professional and Technical Services	7,550.00	7,550.00		15,100.00
<b>Total Purchased Professional and Technical Services</b>	<b>\$7,550.00</b>	<b>\$453,712.00</b>		<b>\$461,262.00</b>
<b>500 Other Purchased Services</b>				
561 Tuition To Other School Districts Within the State	357,886.03	357,886.01		715,772.04
<b>Total Other Purchased Services</b>	<b>\$357,886.03</b>	<b>\$357,886.01</b>		<b>\$715,772.04</b>
<b>600 Supplies</b>				
610 General Supplies	2,002.97	2,002.97		4,005.94
<b>Total Supplies</b>	<b>\$2,002.97</b>	<b>\$2,002.97</b>		<b>\$4,005.94</b>
<b>Total 1400 Other Instructional Programs – Elementary / Secondary</b>	<b>\$388,449.63</b>	<b>\$1,206,651.93</b>		<b>\$1,595,101.56</b>

General Fund (10)

1420 Summer School

100 Personnel Services – Salaries

100 Personnel Services – Salaries

Total Personnel Services – Salaries

200 Personnel Services – Employee Benefits

220 Social Security Contributions

230 PSERS Retirement Contributions

250 Unemployment Compensation

260 Workers' Compensation

Total Personnel Services – Employee Benefits

Total 1420 Summer School

	<u>Elementary</u>	<u>Secondary</u>	<u>Federal</u>	<u>Total</u>
		40,000.00		40,000.00
		<b>\$40,000.00</b>		<b>\$40,000.00</b>
		3,060.00		3,060.00
		9,461.77		9,461.77
		40.97		40.97
		277.78		277.78
		<b>\$12,840.52</b>		<b>\$12,840.52</b>
		<b>\$52,840.52</b>		<b>\$52,840.52</b>

**General Fund (10)**

**1430 Homebound Instruction**

**100 Personnel Services – Salaries**

	<u>Elementary</u>	<u>Secondary</u>	<u>Federal</u>	<u>Total</u>
100 Personnel Services – Salaries	15,658.02	170,353.48		186,011.50
<b>Total Personnel Services – Salaries</b>	<b>\$15,658.02</b>	<b>\$170,353.48</b>		<b>\$186,011.50</b>

**200 Personnel Services – Employee Benefits**

210 Group Insurance – Contracted Provider		8.40		8.40
220 Social Security Contributions	1,197.84	13,032.00		14,229.84
230 PSERS Retirement Contributions	4,046.04	44,019.57		48,065.61
250 Unemployment Compensation		164.91		164.91
260 Workers' Compensation	108.73	1,183.06		1,291.79

<b>Total Personnel Services – Employee Benefits</b>	<b>\$5,352.61</b>	<b>\$58,407.94</b>		<b>\$63,760.55</b>
<b>Total 1430 Homebound Instruction</b>	<b>\$21,010.63</b>	<b>\$228,761.42</b>		<b>\$249,772.05</b>

General Fund (10)

	<u>Elementary</u>	<u>Secondary</u>	<u>Federal</u>	<u>Total</u>
<b>1440 Alternative Regular Education Programs</b>				
<b>300 <u>Purchased Professional and Technical Services</u></b>				
322 Professional Educational Services – lus		446,162.00		446,162.00
<b>Total Purchased Professional and Technical Services</b>		<b>\$446,162.00</b>		<b>\$446,162.00</b>
<b>500 <u>Other Purchased Services</u></b>				
561 Tuition To Other School Districts Within the State	357,886.03	357,886.01		715,772.04
<b>Total Other Purchased Services</b>	<b>\$357,886.03</b>	<b>\$357,886.01</b>		<b>\$715,772.04</b>
<b>Total 1440 Alternative Regular Education Programs</b>	<b>\$357,886.03</b>	<b>\$804,048.01</b>		<b>\$1,161,934.04</b>

General Fund (10)

	<u>Elementary</u>	<u>Secondary</u>	<u>Federal</u>	<u>Total</u>
<b>1441 Adjudicated / Court-Placed Programs</b>				
<b>500 Other Purchased Services</b>				
561 Tuition To Other School Districts Within the State	47,754.45	47,754.44		95,508.89
<b>Total Other Purchased Services</b>	<b>\$47,754.45</b>	<b>\$47,754.44</b>		<b>\$95,508.89</b>
<b>Total 1441 Adjudicated / Court-Placed Programs</b>	<b>\$47,754.45</b>	<b>\$47,754.44</b>		<b>\$95,508.89</b>

General Fund (10)

	<u>Elementary</u>	<u>Secondary</u>	<u>Federal</u>	<u>Total</u>
<b>1442 Alternative Education Programs</b>				
<b>300 <u>Purchased Professional and Technical Services</u></b>				
322 Professional Educational Services – lus		446,162.00		446,162.00
<b>Total Purchased Professional and Technical Services</b>		<b>\$446,162.00</b>		<b>\$446,162.00</b>
<b>500 <u>Other Purchased Services</u></b>				
561 Tuition To Other School Districts Within the State	310,131.58	310,131.57		620,263.15
<b>Total Other Purchased Services</b>	<b>\$310,131.58</b>	<b>\$310,131.57</b>		<b>\$620,263.15</b>
<b>Total 1442 Alternative Education Programs</b>	<b>\$310,131.58</b>	<b>\$756,293.57</b>		<b>\$1,066,425.15</b>



**General Fund (10)**

	<u>Elementary</u>	<u>Secondary</u>	<u>Federal</u>	<u>Total</u>
<b>1490 Additional Other Instructional Programs</b>				
<b>100 Personnel Services – Salaries</b>				
100 Personnel Services – Salaries		76,809.00		76,809.00
<b>Total Personnel Services – Salaries</b>		<b>\$76,809.00</b>		<b>\$76,809.00</b>
<b>200 Personnel Services – Employee Benefits</b>				
210 Group Insurance – Contracted Provider		8,311.76		8,311.76
220 Social Security Contributions		5,875.99		5,875.99
230 PSERS Retirement Contributions		19,847.42		19,847.42
250 Unemployment Compensation		71.48		71.48
260 Workers' Compensation		533.36		533.36
<b>Total Personnel Services – Employee Benefits</b>		<b>\$34,640.01</b>		<b>\$34,640.01</b>
<b>300 Purchased Professional and Technical Services</b>				
390 Other Purchased Professional and Technical Services	7,550.00	7,550.00		15,100.00
<b>Total Purchased Professional and Technical Services</b>	<b>\$7,550.00</b>	<b>\$7,550.00</b>		<b>\$15,100.00</b>
<b>600 Supplies</b>				
610 General Supplies	2,002.97	2,002.97		4,005.94
<b>Total Supplies</b>	<b>\$2,002.97</b>	<b>\$2,002.97</b>		<b>\$4,005.94</b>
<b>Total 1490 Additional Other Instructional Programs</b>	<b>\$9,552.97</b>	<b>\$121,001.98</b>		<b>\$130,554.95</b>

General Fund (10)

2000 Support Services

Total

100 Personnel Services – Salaries

100 Personnel Services – Salaries 13,517,654.02

Total Personnel Services – Salaries \$13,517,654.02

200 Personnel Services – Employee Benefits

210 Group Insurance – Contracted Provider 3,572,208.80

220 Social Security Contributions 999,444.39

230 PSERS Retirement Contributions 3,345,507.02

250 Unemployment Compensation 11,961.97

260 Workers’ Compensation 90,429.37

Total Personnel Services – Employee Benefits \$8,019,551.55

300 Purchased Professional and Technical Services

310 Official / Administrative Services 186,234.42

330 Other Professional Services 850,821.40

340 Technical Services 105,334.56

390 Other Purchased Professional and Technical Services 184,128.30

Total Purchased Professional and Technical Services \$1,326,518.68

400 Purchased Property Services

410 Cleaning Services 88,612.64

420 Utility Services 963,910.40

430 Repairs and Maintenance Services 514,673.30

440 Rentals 28,666.22

460 Extermination Services 17,528.00

490 Other Purchased Property Services 44,687.24

Total Purchased Property Services \$1,658,077.80

500 Other Purchased Services

513 Contracted Carriers 3,219,899.90

515 Public Carriers 54,167.07

516 Student Transportation Services From the IU 866,503.11

520 Insurance – General 42,581.00

521 Fire Insurance 155,642.65

523 General Property and Liability Insurance 30,790.11

529 Other Insurance 28,495.54

530 Communications 153,273.66

549 Other Advertising/Public Relations 11,761.83

550 Printing and Binding 6,592.66

580 Travel 62,738.82

595 IU Payments By Withholding 126,431.58

599 Other Miscellaneous Purchased Services 501.79

Total Other Purchased Services \$4,759,379.72

600 Supplies

610 General Supplies 558,155.55

620 Energy 443,841.19

630 Food 66.50

640 Books and Periodicals 36,014.84

General Fund (10)

2000 Support Services

	<u>Total</u>
<b>Total Supplies</b>	<b>\$1,038,078.08</b>
<b>700 Property</b>	
760 Equipment – Replacement	72,841.06
<b>Total Property</b>	<b>\$72,841.06</b>
<b>800 Other Objects</b>	
810 Dues and Fees	21,905.77
<b>Total Other Objects</b>	<b>\$21,905.77</b>
<b>Total 2000 Support Services</b>	<b>\$30,414,006.68</b>

**General Fund (10)**

	<u>Elementary</u>	<u>Secondary</u>	<u>Federal</u>	<u>Total</u>
<b>2100 Support Services – Students</b>				
<b>100 Personnel Services – Salaries</b>				
100 Personnel Services – Salaries	803,904.07	989,135.63		2,010,757.66
<b>Total Personnel Services – Salaries</b>	<b>\$803,904.07</b>	<b>\$989,135.63</b>		<b>\$2,010,757.66</b>
<b>200 Personnel Services – Employee Benefits</b>				
210 Group Insurance – Contracted Provider	216,173.15	249,338.51		516,785.24
220 Social Security Contributions	53,153.88	72,327.30		142,136.54
230 PSERS Retirement Contributions	176,456.97	241,220.72		474,127.07
250 Unemployment Compensation	687.22	687.20		1,585.94
260 Workers' Compensation	4,845.27	6,585.89		12,943.12
<b>Total Personnel Services – Employee Benefits</b>	<b>\$451,316.49</b>	<b>\$570,159.62</b>		<b>\$1,147,577.91</b>
<b>300 Purchased Professional and Technical Services</b>				
330 Other Professional Services				8,050.00
390 Other Purchased Professional and Technical Services	3,457.00	3,456.99		6,913.99
<b>Total Purchased Professional and Technical Services</b>	<b>\$3,457.00</b>	<b>\$3,456.99</b>		<b>\$14,963.99</b>
<b>500 Other Purchased Services</b>				
580 Travel	1,463.63	1,463.62		5,244.84
<b>Total Other Purchased Services</b>	<b>\$1,463.63</b>	<b>\$1,463.62</b>		<b>\$5,244.84</b>
<b>600 Supplies</b>				
610 General Supplies	10,583.28	10,583.26		23,117.44
<b>Total Supplies</b>	<b>\$10,583.28</b>	<b>\$10,583.26</b>		<b>\$23,117.44</b>
<b>Total 2100 Support Services – Students</b>	<b>\$1,270,724.47</b>	<b>\$1,574,799.12</b>		<b>\$3,201,661.84</b>

**General Fund (10)**

	<u>Elementary</u>	<u>Secondary</u>	<u>Federal</u>	<u>Total</u>
<b>2110 Supervision of Student Services</b>				
<b>100 Personnel Services – Salaries</b>				
100 Personnel Services – Salaries	174,467.04	174,467.01		348,934.05
<b>Total Personnel Services – Salaries</b>	<b>\$174,467.04</b>	<b>\$174,467.01</b>		<b>\$348,934.05</b>
<b>200 Personnel Services – Employee Benefits</b>				
210 Group Insurance – Contracted Provider	23,352.68	23,352.68		46,705.36
220 Social Security Contributions	10,006.23	10,006.22		20,012.45
230 PSERS Retirement Contributions	33,207.80	33,207.79		66,415.59
250 Unemployment Compensation	126.05	126.05		252.10
260 Workers' Compensation	933.12	933.12		1,866.24
<b>Total Personnel Services – Employee Benefits</b>	<b>\$67,625.88</b>	<b>\$67,625.86</b>		<b>\$135,251.74</b>
<b>Total 2110 Supervision of Student Services</b>	<b>\$242,092.92</b>	<b>\$242,092.87</b>		<b>\$484,185.79</b>

**General Fund (10)**

	<u>Elementary</u>	<u>Secondary</u>	<u>Federal</u>	<u>Total</u>
<b>2111 Supervision of Student Services – Head of Component</b>				
<b>100 Personnel Services – Salaries</b>				
100 Personnel Services – Salaries	174,467.04	174,467.01		348,934.05
<b>Total Personnel Services – Salaries</b>	<b>\$174,467.04</b>	<b>\$174,467.01</b>		<b>\$348,934.05</b>
<b>200 Personnel Services – Employee Benefits</b>				
210 Group Insurance – Contracted Provider	23,352.68	23,352.68		46,705.36
220 Social Security Contributions	10,006.23	10,006.22		20,012.45
230 PSERS Retirement Contributions	33,207.80	33,207.79		66,415.59
250 Unemployment Compensation	126.05	126.05		252.10
260 Workers' Compensation	933.12	933.12		1,866.24
<b>Total Personnel Services – Employee Benefits</b>	<b>\$67,625.88</b>	<b>\$67,625.86</b>		<b>\$135,251.74</b>
<b>Total 2111 Supervision of Student Services – Head of Component</b>	<b>\$242,092.92</b>	<b>\$242,092.87</b>		<b>\$484,185.79</b>

**General Fund (10)**

	<u>Elementary</u>	<u>Secondary</u>	<u>Federal</u>	<u>Total</u>
<b>2120 Guidance Services</b>				
<b>100 Personnel Services – Salaries</b>				
100 Personnel Services – Salaries	470,901.61	656,133.20		1,127,034.81
<b>Total Personnel Services – Salaries</b>	<b>\$470,901.61</b>	<b>\$656,133.20</b>		<b>\$1,127,034.81</b>
<b>200 Personnel Services – Employee Benefits</b>				
210 Group Insurance – Contracted Provider	149,729.76	182,895.13		332,624.89
220 Social Security Contributions	31,019.72	50,193.15		81,212.87
230 PSERS Retirement Contributions	105,058.24	169,822.00		274,880.24
250 Unemployment Compensation	488.06	488.05		976.11
260 Workers' Compensation	2,811.15	4,551.77		7,362.92
<b>Total Personnel Services – Employee Benefits</b>	<b>\$289,106.93</b>	<b>\$407,950.10</b>		<b>\$697,057.03</b>
<b>300 Purchased Professional and Technical Services</b>				
390 Other Purchased Professional and Technical Services	3,457.00	3,456.99		6,913.99
<b>Total Purchased Professional and Technical Services</b>	<b>\$3,457.00</b>	<b>\$3,456.99</b>		<b>\$6,913.99</b>
<b>600 Supplies</b>				
610 General Supplies	700.90	700.89		1,401.79
<b>Total Supplies</b>	<b>\$700.90</b>	<b>\$700.89</b>		<b>\$1,401.79</b>
<b>Total 2120 Guidance Services</b>	<b>\$764,166.44</b>	<b>\$1,068,241.18</b>		<b>\$1,832,407.62</b>

**General Fund (10)**

**2130 Attendance Services**

Elementary                      Secondary                      Federal                      Total

**100 Personnel Services – Salaries**

100 Personnel Services – Salaries 199,049.92

**Total Personnel Services – Salaries \$199,049.92**

**200 Personnel Services – Employee Benefits**

210 Group Insurance – Contracted Provider 45,901.79

220 Social Security Contributions 15,227.36

230 PSERS Retirement Contributions 51,434.54

250 Unemployment Compensation 184.94

260 Workers' Compensation 1,382.23

**Total Personnel Services – Employee Benefits \$114,130.86**

**500 Other Purchased Services**

580 Travel 2,317.59

**Total Other Purchased Services \$2,317.59**

**600 Supplies**

610 General Supplies 278.24

**Total Supplies \$278.24**

**Total 2130 Attendance Services \$315,776.61**



**General Fund (10)**

	<u>Elementary</u>	<u>Secondary</u>	<u>Federal</u>	<u>Total</u>
<b>2140 Psychological Services</b>				
<b>100 Personnel Services – Salaries</b>				
100 Personnel Services – Salaries	158,535.42	158,535.42		317,070.84
<b>Total Personnel Services – Salaries</b>	<b>\$158,535.42</b>	<b>\$158,535.42</b>		<b>\$317,070.84</b>
<b>200 Personnel Services – Employee Benefits</b>				
210 Group Insurance – Contracted Provider	43,090.71	43,090.70		86,181.41
220 Social Security Contributions	12,127.93	12,127.93		24,255.86
230 PSERS Retirement Contributions	38,190.93	38,190.93		76,381.86
250 Unemployment Compensation	73.11	73.10		146.21
260 Workers' Compensation	1,101.00	1,101.00		2,202.00
<b>Total Personnel Services – Employee Benefits</b>	<b>\$94,583.68</b>	<b>\$94,583.66</b>		<b>\$189,167.34</b>
<b>500 Other Purchased Services</b>				
580 Travel	1,463.63	1,463.62		2,927.25
<b>Total Other Purchased Services</b>	<b>\$1,463.63</b>	<b>\$1,463.62</b>		<b>\$2,927.25</b>
<b>600 Supplies</b>				
610 General Supplies	9,882.38	9,882.37		19,764.75
<b>Total Supplies</b>	<b>\$9,882.38</b>	<b>\$9,882.37</b>		<b>\$19,764.75</b>
<b>Total 2140 Psychological Services</b>	<b>\$264,465.11</b>	<b>\$264,465.07</b>		<b>\$528,930.18</b>

General Fund (10)

2170 Student Accounting Services

Elementary

Secondary

Federal

Total

100 Personnel Services – Salaries

100 Personnel Services – Salaries

18,668.04

**Total Personnel Services – Salaries**

**\$18,668.04**

200 Personnel Services – Employee Benefits

210 Group Insurance – Contracted Provider

5,371.79

220 Social Security Contributions

1,428.00

230 PSERS Retirement Contributions

5,014.84

250 Unemployment Compensation

26.58

260 Workers' Compensation

129.73

**Total Personnel Services – Employee Benefits**

**\$11,970.94**

300 Purchased Professional and Technical Services

330 Other Professional Services

8,050.00

**Total Purchased Professional and Technical Services**

**\$8,050.00**

600 Supplies

610 General Supplies

1,672.66

**Total Supplies**

**\$1,672.66**

**Total 2170 Student Accounting Services**

**\$40,361.64**

**General Fund (10)**

**2200 Support Services – Instructional Staff**

	<u>Elementary</u>	<u>Secondary</u>	<u>Federal</u>	<u>Total</u>
<b>100 Personnel Services – Salaries</b>				
100 Personnel Services – Salaries	1,545,236.68	734,163.58	39,649.47	2,319,049.73
<b>Total Personnel Services – Salaries</b>	<b>\$1,545,236.68</b>	<b>\$734,163.58</b>	<b>\$39,649.47</b>	<b>\$2,319,049.73</b>
<b>200 Personnel Services – Employee Benefits</b>				
210 Group Insurance – Contracted Provider	313,023.58	151,908.91		464,932.49
220 Social Security Contributions	120,408.81	57,582.83	3,033.19	181,024.83
230 PSERS Retirement Contributions	391,417.68	197,803.49	5,738.11	594,959.28
250 Unemployment Compensation	1,026.90	1,026.89		2,053.79
260 Workers' Compensation	10,916.61	5,217.01	265.57	16,399.19
<b>Total Personnel Services – Employee Benefits</b>	<b>\$836,793.58</b>	<b>\$413,539.13</b>	<b>\$9,036.87</b>	<b>\$1,259,369.58</b>
<b>300 Purchased Professional and Technical Services</b>				
340 Technical Services	19,795.75	19,795.75		39,591.50
<b>Total Purchased Professional and Technical Services</b>	<b>\$19,795.75</b>	<b>\$19,795.75</b>		<b>\$39,591.50</b>
<b>500 Other Purchased Services</b>				
580 Travel	8,196.91	8,196.89	1,576.45	17,970.25
599 Other Miscellaneous Purchased Services	66.18	66.18		132.36
<b>Total Other Purchased Services</b>	<b>\$8,263.09</b>	<b>\$8,263.07</b>	<b>\$1,576.45</b>	<b>\$18,102.61</b>
<b>600 Supplies</b>				
610 General Supplies	8,180.55	7,695.54		15,876.09
640 Books and Periodicals	16,413.50	16,413.50		32,827.00
<b>Total Supplies</b>	<b>\$24,594.05</b>	<b>\$24,109.04</b>		<b>\$48,703.09</b>
<b>700 Property</b>				
760 Equipment – Replacement	29,360.53	29,360.53		58,721.06
<b>Total Property</b>	<b>\$29,360.53</b>	<b>\$29,360.53</b>		<b>\$58,721.06</b>
<b>800 Other Objects</b>				
810 Dues and Fees	122.50	122.50		245.00
<b>Total Other Objects</b>	<b>\$122.50</b>	<b>\$122.50</b>		<b>\$245.00</b>
<b>Total 2200 Support Services – Instructional Staff</b>	<b>\$2,464,166.18</b>	<b>\$1,229,353.60</b>	<b>\$50,262.79</b>	<b>\$3,743,782.57</b>

**General Fund (10)**

	<u>Elementary</u>	<u>Secondary</u>	<u>Federal</u>	<u>Total</u>
<b>2210 Supervision of Educational Media Services</b>				
<b>100 Personnel Services – Salaries</b>				
100 Personnel Services – Salaries	32,323.98	32,323.98		64,647.96
<b>Total Personnel Services – Salaries</b>	<b>\$32,323.98</b>	<b>\$32,323.98</b>		<b>\$64,647.96</b>
<b>200 Personnel Services – Employee Benefits</b>				
210 Group Insurance – Contracted Provider	8,179.72	8,179.72		16,359.44
220 Social Security Contributions	2,472.80	2,472.80		4,945.60
230 PSERS Retirement Contributions	8,438.93	8,438.93		16,877.86
250 Unemployment Compensation	25.38	25.38		50.76
260 Workers' Compensation	224.56	224.55		449.11
<b>Total Personnel Services – Employee Benefits</b>	<b>\$19,341.39</b>	<b>\$19,341.38</b>		<b>\$38,682.77</b>
<b>600 Supplies</b>				
610 General Supplies	985.00	500.00		1,485.00
<b>Total Supplies</b>	<b>\$985.00</b>	<b>\$500.00</b>		<b>\$1,485.00</b>
<b>Total 2210 Supervision of Educational Media Services</b>	<b>\$52,650.37</b>	<b>\$52,165.36</b>		<b>\$104,815.73</b>

**General Fund (10)**

**2211 Supervision of Educational Media Services – Head of Component**

	<u>Elementary</u>	<u>Secondary</u>	<u>Federal</u>	<u>Total</u>
<b>100 Personnel Services – Salaries</b>				
100 Personnel Services – Salaries	32,323.98	32,323.98		64,647.96
<b>Total Personnel Services – Salaries</b>	<b>\$32,323.98</b>	<b>\$32,323.98</b>		<b>\$64,647.96</b>
<b>200 Personnel Services – Employee Benefits</b>				
210 Group Insurance – Contracted Provider	8,179.72	8,179.72		16,359.44
220 Social Security Contributions	2,472.80	2,472.80		4,945.60
230 PSERS Retirement Contributions	8,438.93	8,438.93		16,877.86
250 Unemployment Compensation	25.38	25.38		50.76
260 Workers' Compensation	224.56	224.55		449.11
<b>Total Personnel Services – Employee Benefits</b>	<b>\$19,341.39</b>	<b>\$19,341.38</b>		<b>\$38,682.77</b>
<b>600 Supplies</b>				
610 General Supplies	985.00	500.00		1,485.00
<b>Total Supplies</b>	<b>\$985.00</b>	<b>\$500.00</b>		<b>\$1,485.00</b>
<b>Total 2211 Supervision of Educational Media Services – Head of Component</b>	<b>\$52,650.37</b>	<b>\$52,165.36</b>		<b>\$104,815.73</b>

**General Fund (10)**

	<u>Elementary</u>	<u>Secondary</u>	<u>Federal</u>	<u>Total</u>
<b>2220 Technology Support Services</b>				
<b>100 Personnel Services – Salaries</b>				
100 Personnel Services – Salaries	116,022.84	116,022.83		232,045.67
<b>Total Personnel Services – Salaries</b>	<b>\$116,022.84</b>	<b>\$116,022.83</b>		<b>\$232,045.67</b>
<b>200 Personnel Services – Employee Benefits</b>				
210 Group Insurance – Contracted Provider	31,982.82	31,982.81		63,965.63
220 Social Security Contributions	8,882.00	8,881.99		17,763.99
230 PSERS Retirement Contributions	30,420.32	30,420.31		60,840.63
250 Unemployment Compensation	108.34	108.34		216.68
260 Workers' Compensation	800.60	800.59		1,601.19
<b>Total Personnel Services – Employee Benefits</b>	<b>\$72,194.08</b>	<b>\$72,194.04</b>		<b>\$144,388.12</b>
<b>300 Purchased Professional and Technical Services</b>				
340 Technical Services	8,372.00	8,372.00		16,744.00
<b>Total Purchased Professional and Technical Services</b>	<b>\$8,372.00</b>	<b>\$8,372.00</b>		<b>\$16,744.00</b>
<b>500 Other Purchased Services</b>				
580 Travel	801.51	801.50		1,603.01
<b>Total Other Purchased Services</b>	<b>\$801.51</b>	<b>\$801.50</b>		<b>\$1,603.01</b>
<b>600 Supplies</b>				
610 General Supplies	7,178.90	7,178.89		14,357.79
640 Books and Periodicals	16,413.50	16,413.50		32,827.00
<b>Total Supplies</b>	<b>\$23,592.40</b>	<b>\$23,592.39</b>		<b>\$47,184.79</b>
<b>700 Property</b>				
760 Equipment – Replacement	29,360.53	29,360.53		58,721.06
<b>Total Property</b>	<b>\$29,360.53</b>	<b>\$29,360.53</b>		<b>\$58,721.06</b>
<b>Total 2220 Technology Support Services</b>	<b>\$250,343.36</b>	<b>\$250,343.29</b>		<b>\$500,686.65</b>

General Fund (10)

2250 School Library Services

100 Personnel Services – Salaries

	<u>Elementary</u>	<u>Secondary</u>	<u>Federal</u>	<u>Total</u>
100 Personnel Services – Salaries	635,427.80	65,717.27		701,145.07

**Total Personnel Services – Salaries**

<b>Total Personnel Services – Salaries</b>	<b>\$635,427.80</b>	<b>\$65,717.27</b>		<b>\$701,145.07</b>
--	---------------------	--------------------	--	---------------------

200 Personnel Services – Employee Benefits

210 Group Insurance – Contracted Provider	99,011.30	14,581.18		113,592.48
220 Social Security Contributions	50,678.46	6,524.63		57,203.09
230 PSERS Retirement Contributions	153,313.49	22,038.59		175,352.08
250 Unemployment Compensation	330.55	330.55		661.10
260 Workers' Compensation	4,599.32	592.29		5,191.61

**Total Personnel Services – Employee Benefits**

<b>Total Personnel Services – Employee Benefits</b>	<b>\$307,933.12</b>	<b>\$44,067.24</b>		<b>\$352,000.36</b>
---	---------------------	--------------------	--	---------------------

**Total 2250 School Library Services**

<b>Total 2250 School Library Services</b>	<b>\$943,360.92</b>	<b>\$109,784.51</b>		<b>\$1,053,145.43</b>
---	---------------------	---------------------	--	-----------------------

**General Fund (10)**

**2260 Instruction and Curriculum Development Services**

	<u>Elementary</u>	<u>Secondary</u>	<u>Federal</u>	<u>Total</u>
<b>100 Personnel Services – Salaries</b>				
100 Personnel Services – Salaries	581,807.32	340,444.76		922,252.08
<b>Total Personnel Services – Salaries</b>	<b>\$581,807.32</b>	<b>\$340,444.76</b>		<b>\$922,252.08</b>
<b>200 Personnel Services – Employee Benefits</b>				
210 Group Insurance – Contracted Provider	141,697.92	65,013.39		206,711.31
220 Social Security Contributions	44,631.90	25,959.77		70,591.67
230 PSERS Retirement Contributions	152,822.14	90,482.86		243,305.00
250 Unemployment Compensation	380.38	380.38		760.76
260 Workers' Compensation	4,044.47	2,351.92		6,396.39
<b>Total Personnel Services – Employee Benefits</b>	<b>\$343,576.81</b>	<b>\$184,188.32</b>		<b>\$527,765.13</b>
<b>500 Other Purchased Services</b>				
580 Travel	7,026.98	7,026.97	1,576.45	15,630.40
599 Other Miscellaneous Purchased Services	66.18	66.18		132.36
<b>Total Other Purchased Services</b>	<b>\$7,093.16</b>	<b>\$7,093.15</b>	<b>\$1,576.45</b>	<b>\$15,762.76</b>
<b>600 Supplies</b>				
610 General Supplies	16.65	16.65		33.30
<b>Total Supplies</b>	<b>\$16.65</b>	<b>\$16.65</b>		<b>\$33.30</b>
<b>800 Other Objects</b>				
810 Dues and Fees	122.50	122.50		245.00
<b>Total Other Objects</b>	<b>\$122.50</b>	<b>\$122.50</b>		<b>\$245.00</b>
<b>Total 2260 Instruction and Curriculum Development Services</b>	<b>\$932,616.44</b>	<b>\$531,865.38</b>	<b>\$1,576.45</b>	<b>\$1,466,058.27</b>



**General Fund (10)**

	<u>Elementary</u>	<u>Secondary</u>	<u>Federal</u>	<u>Total</u>
<b>2270 Instructional Staff Professional Development Services</b>				
<b>100 Personnel Services – Salaries</b>				
100 Personnel Services – Salaries	179,654.74	179,654.74	39,649.47	398,958.95
<b>Total Personnel Services – Salaries</b>	<b>\$179,654.74</b>	<b>\$179,654.74</b>	<b>\$39,649.47</b>	<b>\$398,958.95</b>
<b>200 Personnel Services – Employee Benefits</b>				
210 Group Insurance – Contracted Provider	32,151.82	32,151.81		64,303.63
220 Social Security Contributions	13,743.65	13,743.64	3,033.19	30,520.48
230 PSERS Retirement Contributions	46,422.80	46,422.80	5,738.11	98,583.71
250 Unemployment Compensation	182.25	182.24		364.49
260 Workers' Compensation	1,247.66	1,247.66	265.57	2,760.89
<b>Total Personnel Services – Employee Benefits</b>	<b>\$93,748.18</b>	<b>\$93,748.15</b>	<b>\$9,036.87</b>	<b>\$196,533.20</b>
<b>300 Purchased Professional and Technical Services</b>				
340 Technical Services	11,423.75	11,423.75		22,847.50
<b>Total Purchased Professional and Technical Services</b>	<b>\$11,423.75</b>	<b>\$11,423.75</b>		<b>\$22,847.50</b>
<b>500 Other Purchased Services</b>				
580 Travel	368.42	368.42		736.84
<b>Total Other Purchased Services</b>	<b>\$368.42</b>	<b>\$368.42</b>		<b>\$736.84</b>
<b>Total 2270 Instructional Staff Professional Development Services</b>	<b>\$285,195.09</b>	<b>\$285,195.06</b>	<b>\$48,686.34</b>	<b>\$619,076.49</b>

**General Fund (10)**

**2300 Support Services – Administration**

	<u>Elementary</u>	<u>Secondary</u>	<u>Federal</u>	<u>Total</u>
<b>100 Personnel Services – Salaries</b>				
100 Personnel Services – Salaries	1,370,673.84	1,426,032.35		3,178,628.09
<b>Total Personnel Services – Salaries</b>	<b>\$1,370,673.84</b>	<b>\$1,426,032.35</b>		<b>\$3,178,628.09</b>
<b>200 Personnel Services – Employee Benefits</b>				
210 Group Insurance – Contracted Provider	387,812.91	353,140.50		803,486.65
220 Social Security Contributions	93,861.15	100,050.74		221,159.86
230 PSERS Retirement Contributions	316,855.43	341,523.77		749,170.55
250 Unemployment Compensation	1,231.85	1,231.85		2,764.77
260 Workers' Compensation	8,478.75	9,067.10		19,845.18
<b>Total Personnel Services – Employee Benefits</b>	<b>\$808,240.09</b>	<b>\$805,013.96</b>		<b>\$1,796,427.01</b>
<b>300 Purchased Professional and Technical Services</b>				
310 Official / Administrative Services				186,234.42
330 Other Professional Services			3,600.00	245,761.90
390 Other Purchased Professional and Technical Services				119,101.27
<b>Total Purchased Professional and Technical Services</b>			<b>\$3,600.00</b>	<b>\$551,097.59</b>
<b>500 Other Purchased Services</b>				
520 Insurance – General				42,581.00
530 Communications				4,770.96
549 Other Advertising/Public Relations				4,473.59
550 Printing and Binding		2,271.30		6,592.66
580 Travel	701.07	140.32		6,438.76
599 Other Miscellaneous Purchased Services				369.43
<b>Total Other Purchased Services</b>	<b>\$701.07</b>	<b>\$2,411.62</b>		<b>\$65,226.40</b>
<b>600 Supplies</b>				
610 General Supplies	3,773.22	8,161.68		18,155.06
640 Books and Periodicals				3,057.84
<b>Total Supplies</b>	<b>\$3,773.22</b>	<b>\$8,161.68</b>		<b>\$21,212.90</b>
<b>800 Other Objects</b>				
810 Dues and Fees	375.00	500.00		17,365.00
<b>Total Other Objects</b>	<b>\$375.00</b>	<b>\$500.00</b>		<b>\$17,365.00</b>
<b>Total 2300 Support Services – Administration</b>	<b>\$2,183,763.22</b>	<b>\$2,242,119.61</b>	<b>\$3,600.00</b>	<b>\$5,629,956.99</b>

**General Fund (10)**

	<u>Elementary</u>	<u>Secondary</u>	<u>Federal</u>	<u>Total</u>
<b>2310 Board Services</b>				
<b>100 Personnel Services – Salaries</b>				
100 Personnel Services – Salaries				5,578.00
<b>Total Personnel Services – Salaries</b>				<b>\$5,578.00</b>
<b>200 Personnel Services – Employee Benefits</b>				
210 Group Insurance – Contracted Provider				2,568.00
220 Social Security Contributions				427.47
230 PSERS Retirement Contributions				1,441.28
250 Unemployment Compensation				5.33
260 Workers' Compensation				37.26
<b>Total Personnel Services – Employee Benefits</b>				<b>\$4,479.34</b>
<b>300 Purchased Professional and Technical Services</b>				
330 Other Professional Services			3,600.00	40,800.00
390 Other Purchased Professional and Technical Services				2,533.00
<b>Total Purchased Professional and Technical Services</b>			<b>\$3,600.00</b>	<b>\$43,333.00</b>
<b>500 Other Purchased Services</b>				
520 Insurance – General				35,645.00
549 Other Advertising/Public Relations				4,473.59
580 Travel				2,430.17
599 Other Miscellaneous Purchased Services				369.43
<b>Total Other Purchased Services</b>				<b>\$42,918.19</b>
<b>600 Supplies</b>				
610 General Supplies				2,167.60
640 Books and Periodicals				262.40
<b>Total Supplies</b>				<b>\$2,430.00</b>
<b>800 Other Objects</b>				
810 Dues and Fees				13,544.00
<b>Total Other Objects</b>				<b>\$13,544.00</b>
<b>Total 2310 Board Services</b>			<b>\$3,600.00</b>	<b>\$112,282.53</b>

**General Fund (10)**

	<u>Elementary</u>	<u>Secondary</u>	<u>Federal</u>	<u>Total</u>
<b>2330 Tax Assessment and Collection Services</b>				
<b>100 Personnel Services – Salaries</b>				
100 Personnel Services – Salaries				34,200.00
<b>Total Personnel Services – Salaries</b>				<b>\$34,200.00</b>
<b>200 Personnel Services – Employee Benefits</b>				
220 Social Security Contributions				2,616.42
<b>Total Personnel Services – Employee Benefits</b>				<b>\$2,616.42</b>
<b>300 Purchased Professional and Technical Services</b>				
310 Official / Administrative Services				186,234.42
390 Other Purchased Professional and Technical Services				59,339.00
<b>Total Purchased Professional and Technical Services</b>				<b>\$245,573.42</b>
<b>500 Other Purchased Services</b>				
520 Insurance – General				6,936.00
530 Communications				4,770.96
550 Printing and Binding				4,321.36
<b>Total Other Purchased Services</b>				<b>\$16,028.32</b>
<b>Total 2330 Tax Assessment and Collection Services</b>				<b>\$298,418.16</b>

General Fund (10)

	<u>Elementary</u>	<u>Secondary</u>	<u>Federal</u>	<u>Total</u>
<b>2350 Legal and Accounting Services</b>				
<b>300 <u>Purchased Professional and Technical Services</u></b>				
330 Other Professional Services				195,000.00
390 Other Purchased Professional and Technical Services				57,229.27
<b>Total Purchased Professional and Technical Services</b>				<b>\$252,229.27</b>
<b>500 <u>Other Purchased Services</u></b>				
580 Travel				448.00
<b>Total Other Purchased Services</b>				<b>\$448.00</b>
<b>600 <u>Supplies</u></b>				
640 Books and Periodicals				2,402.00
<b>Total Supplies</b>				<b>\$2,402.00</b>
<b>Total 2350 Legal and Accounting Services</b>				<b>\$255,079.27</b>

General Fund (10)

2360 Office of the Superintendent / Executive Director Services

Elementary

Secondary

Federal

Total

100 Personnel Services – Salaries

100 Personnel Services – Salaries

342,143.90

**Total Personnel Services – Salaries**

**\$342,143.90**

200 Personnel Services – Employee Benefits

210 Group Insurance – Contracted Provider

59,965.24

220 Social Security Contributions

24,204.08

230 PSERS Retirement Contributions

89,350.07

250 Unemployment Compensation

295.74

260 Workers' Compensation

2,262.07

**Total Personnel Services – Employee Benefits**

**\$176,077.20**

300 Purchased Professional and Technical Services

330 Other Professional Services

9,961.90

**Total Purchased Professional and Technical Services**

**\$9,961.90**

500 Other Purchased Services

580 Travel

2,719.20

**Total Other Purchased Services**

**\$2,719.20**

600 Supplies

610 General Supplies

4,052.56

640 Books and Periodicals

393.44

**Total Supplies**

**\$4,446.00**

800 Other Objects

810 Dues and Fees

2,946.00

**Total Other Objects**

**\$2,946.00**

**Total 2360 Office of the Superintendent / Executive Director Services**

**\$538,294.20**

**General Fund (10)**

**2380 Office of the Principal Services**

**100 Personnel Services – Salaries**

	<u>Elementary</u>	<u>Secondary</u>	<u>Federal</u>	<u>Total</u>
100 Personnel Services – Salaries	1,370,673.84	1,426,032.35		2,796,706.19
<b>Total Personnel Services – Salaries</b>	<b>\$1,370,673.84</b>	<b>\$1,426,032.35</b>		<b>\$2,796,706.19</b>

**200 Personnel Services – Employee Benefits**

210 Group Insurance – Contracted Provider	387,812.91	353,140.50		740,953.41
220 Social Security Contributions	93,861.15	100,050.74		193,911.89
230 PSERS Retirement Contributions	316,855.43	341,523.77		658,379.20
250 Unemployment Compensation	1,231.85	1,231.85		2,463.70
260 Workers' Compensation	8,478.75	9,067.10		17,545.85
<b>Total Personnel Services – Employee Benefits</b>	<b>\$808,240.09</b>	<b>\$805,013.96</b>		<b>\$1,613,254.05</b>

**500 Other Purchased Services**

550 Printing and Binding		2,271.30		2,271.30
580 Travel	701.07	140.32		841.39
<b>Total Other Purchased Services</b>	<b>\$701.07</b>	<b>\$2,411.62</b>		<b>\$3,112.69</b>

**600 Supplies**

610 General Supplies	3,773.22	8,161.68		11,934.90
<b>Total Supplies</b>	<b>\$3,773.22</b>	<b>\$8,161.68</b>		<b>\$11,934.90</b>

**800 Other Objects**

810 Dues and Fees	375.00	500.00		875.00
<b>Total Other Objects</b>	<b>\$375.00</b>	<b>\$500.00</b>		<b>\$875.00</b>

**Total 2380 Office of the Principal Services**

	<b>\$2,183,763.22</b>	<b>\$2,242,119.61</b>		<b>\$4,425,882.83</b>
--	-----------------------	-----------------------	--	-----------------------

General Fund (10)

2400 Support Services – Pupil Health

Elementary

Secondary

Federal

Total

100 Personnel Services – Salaries

100 Personnel Services – Salaries

984,571.18

**Total Personnel Services – Salaries**

**\$984,571.18**

200 Personnel Services – Employee Benefits

210 Group Insurance – Contracted Provider

221,205.26

220 Social Security Contributions

71,004.99

230 PSERS Retirement Contributions

236,397.42

250 Unemployment Compensation

886.41

260 Workers' Compensation

6,443.22

**Total Personnel Services – Employee Benefits**

**\$535,937.30**

300 Purchased Professional and Technical Services

330 Other Professional Services

295,724.80

530,745.40

**Total Purchased Professional and Technical Services**

**\$295,724.80**

**\$530,745.40**

400 Purchased Property Services

430 Repairs and Maintenance Services

810.00

**Total Purchased Property Services**

**\$810.00**

500 Other Purchased Services

580 Travel

94.27

**Total Other Purchased Services**

**\$94.27**

600 Supplies

610 General Supplies

22,242.20

**Total Supplies**

**\$22,242.20**

**Total 2400 Support Services – Pupil Health**

**\$295,724.80**

**\$2,074,400.35**



General Fund (10)

2420 Medical Services

Elementary

Secondary

Federal

Total

300 Purchased Professional and Technical Services

330 Other Professional Services

25,640.60

**Total Purchased Professional and Technical Services**

**\$25,640.60**

400 Purchased Property Services

430 Repairs and Maintenance Services

810.00

**Total Purchased Property Services**

**\$810.00**

600 Supplies

610 General Supplies

14,496.71

**Total Supplies**

**\$14,496.71**

**Total 2420 Medical Services**

**\$40,947.31**

General Fund (10)

2430 Dental Services

Elementary

Secondary

Federal

Total

100 Personnel Services – Salaries

100 Personnel Services – Salaries

59,425.81

**Total Personnel Services – Salaries**

**\$59,425.81**

200 Personnel Services – Employee Benefits

210 Group Insurance – Contracted Provider

24,053.42

220 Social Security Contributions

4,547.97

230 PSERS Retirement Contributions

15,361.68

250 Unemployment Compensation

55.08

260 Workers' Compensation

412.94

**Total Personnel Services – Employee Benefits**

**\$44,431.09**

600 Supplies

610 General Supplies

7,745.49

**Total Supplies**

**\$7,745.49**

**Total 2430 Dental Services**

**\$111,602.39**

**General Fund (10)**

**2440 Nursing Services**

	<u>Elementary</u>	<u>Secondary</u>	<u>Federal</u>	<u>Total</u>
<b>100 Personnel Services – Salaries</b>				
100 Personnel Services – Salaries				811,911.57
<b>Total Personnel Services – Salaries</b>				<b>\$811,911.57</b>
<b>200 Personnel Services – Employee Benefits</b>				
210 Group Insurance – Contracted Provider				185,808.55
220 Social Security Contributions				57,794.72
230 PSERS Retirement Contributions				191,775.94
250 Unemployment Compensation				724.54
260 Workers' Compensation				5,243.89
<b>Total Personnel Services – Employee Benefits</b>				<b>\$441,347.64</b>
<b>300 Purchased Professional and Technical Services</b>				
330 Other Professional Services			238,061.00	447,441.00
<b>Total Purchased Professional and Technical Services</b>			<b>\$238,061.00</b>	<b>\$447,441.00</b>
<b>500 Other Purchased Services</b>				
580 Travel				94.27
<b>Total Other Purchased Services</b>				<b>\$94.27</b>
<b>Total 2440 Nursing Services</b>			<b>\$238,061.00</b>	<b>\$1,700,794.48</b>

General Fund (10)

	<u>Elementary</u>	<u>Secondary</u>	<u>Federal</u>	<u>Total</u>
<b>2450 Nonpublic Health Services</b>				
<b>100 Personnel Services – Salaries</b>				
100 Personnel Services – Salaries				113,233.80
<b>Total Personnel Services – Salaries</b>				<b>\$113,233.80</b>
<b>200 Personnel Services – Employee Benefits</b>				
210 Group Insurance – Contracted Provider				11,343.29
220 Social Security Contributions				8,662.30
230 PSERS Retirement Contributions				29,259.80
250 Unemployment Compensation				106.79
260 Workers' Compensation				786.39
<b>Total Personnel Services – Employee Benefits</b>				<b>\$50,158.57</b>
<b>Total 2450 Nonpublic Health Services</b>				<b>\$163,392.37</b>

General Fund (10)

2490 Other Health Services

Elementary

Secondary

Federal

Total

300 Purchased Professional and Technical Services

330 Other Professional Services

57,663.80

57,663.80

**Total Purchased Professional and Technical Services**

**\$57,663.80**

**\$57,663.80**

**Total 2490 Other Health Services**

**\$57,663.80**

**\$57,663.80**

**General Fund (10)**

	<u>Elementary</u>	<u>Secondary</u>	<u>Federal</u>	<u>Total</u>
<b>2500 Support Services – Business</b>				
<b>100 Personnel Services – Salaries</b>				
100 Personnel Services – Salaries				583,164.78
<b>Total Personnel Services – Salaries</b>				<b>\$583,164.78</b>
<b>200 Personnel Services – Employee Benefits</b>				
210 Group Insurance – Contracted Provider				184,067.72
220 Social Security Contributions				44,593.61
230 PSERS Retirement Contributions				152,491.46
250 Unemployment Compensation				539.72
260 Workers' Compensation				4,032.59
<b>Total Personnel Services – Employee Benefits</b>				<b>\$385,725.10</b>
<b>300 Purchased Professional and Technical Services</b>				
340 Technical Services				65,402.06
<b>Total Purchased Professional and Technical Services</b>				<b>\$65,402.06</b>
<b>500 Other Purchased Services</b>				
530 Communications				23,524.88
549 Other Advertising/Public Relations				7,288.24
580 Travel				1,616.48
<b>Total Other Purchased Services</b>				<b>\$32,429.60</b>
<b>600 Supplies</b>				
610 General Supplies				12,858.56
640 Books and Periodicals				130.00
<b>Total Supplies</b>				<b>\$12,988.56</b>
<b>800 Other Objects</b>				
810 Dues and Fees				3,479.87
<b>Total Other Objects</b>				<b>\$3,479.87</b>
<b>Total 2500 Support Services – Business</b>				<b>\$1,083,189.97</b>

**General Fund (10)**

**2510 Fiscal Services**

Elementary                      Secondary                      Federal                      Total

<b>100</b>	<b><u>Personnel Services – Salaries</u></b>			
	100 Personnel Services – Salaries			427,128.31
<b>Total Personnel Services – Salaries</b>				<b>\$427,128.31</b>
<b>200</b>	<b><u>Personnel Services – Employee Benefits</u></b>			
	210 Group Insurance – Contracted Provider			121,269.87
	220 Social Security Contributions			32,642.19
	230 PSERS Retirement Contributions			111,661.86
	250 Unemployment Compensation			394.15
	260 Workers' Compensation			2,948.68
<b>Total Personnel Services – Employee Benefits</b>				<b>\$268,916.75</b>
<b>300</b>	<b><u>Purchased Professional and Technical Services</u></b>			
	340 Technical Services			65,402.06
<b>Total Purchased Professional and Technical Services</b>				<b>\$65,402.06</b>
<b>500</b>	<b><u>Other Purchased Services</u></b>			
	580 Travel			1,550.93
<b>Total Other Purchased Services</b>				<b>\$1,550.93</b>
<b>600</b>	<b><u>Supplies</u></b>			
	610 General Supplies			9,888.22
	640 Books and Periodicals			130.00
<b>Total Supplies</b>				<b>\$10,018.22</b>
<b>800</b>	<b><u>Other Objects</u></b>			
	810 Dues and Fees			3,479.87
<b>Total Other Objects</b>				<b>\$3,479.87</b>
<b>Total 2510 Fiscal Services</b>				<b>\$776,496.14</b>

**General Fund (10)**

**2511 Supervision of Fiscal Services - Head of Component**

	<u>Elementary</u>	<u>Secondary</u>	<u>Federal</u>	<u>Total</u>
<b>100 Personnel Services – Salaries</b>				
100 Personnel Services – Salaries				152,142.91
<b>Total Personnel Services – Salaries</b>				<b>\$152,142.91</b>
<b>200 Personnel Services – Employee Benefits</b>				
210 Group Insurance – Contracted Provider				37,049.74
220 Social Security Contributions				11,575.91
230 PSERS Retirement Contributions				39,584.67
250 Unemployment Compensation				143.09
260 Workers' Compensation				1,053.44
<b>Total Personnel Services – Employee Benefits</b>				<b>\$89,406.85</b>
<b>500 Other Purchased Services</b>				
580 Travel				440.54
<b>Total Other Purchased Services</b>				<b>\$440.54</b>
<b>600 Supplies</b>				
640 Books and Periodicals				130.00
<b>Total Supplies</b>				<b>\$130.00</b>
<b>800 Other Objects</b>				
810 Dues and Fees				100.00
<b>Total Other Objects</b>				<b>\$100.00</b>
<b>Total 2511 Supervision of Fiscal Services - Head of Component</b>				<b>\$242,220.30</b>



**General Fund (10)**

**2512 Budgeting Services**

	<u>Elementary</u>	<u>Secondary</u>	<u>Federal</u>	<u>Total</u>
<b>100 Personnel Services – Salaries</b>				
100 Personnel Services – Salaries				79,531.20
<b>Total Personnel Services – Salaries</b>				<b>\$79,531.20</b>
<b>200 Personnel Services – Employee Benefits</b>				
210 Group Insurance – Contracted Provider				8,081.69
220 Social Security Contributions				6,085.07
230 PSERS Retirement Contributions				20,850.36
250 Unemployment Compensation				74.54
260 Workers' Compensation				549.15
<b>Total Personnel Services – Employee Benefits</b>				<b>\$35,640.81</b>
<b>300 Purchased Professional and Technical Services</b>				
340 Technical Services				48,251.97
<b>Total Purchased Professional and Technical Services</b>				<b>\$48,251.97</b>
<b>500 Other Purchased Services</b>				
580 Travel				961.96
<b>Total Other Purchased Services</b>				<b>\$961.96</b>
<b>800 Other Objects</b>				
810 Dues and Fees				100.00
<b>Total Other Objects</b>				<b>\$100.00</b>
<b>Total 2512 Budgeting Services</b>				<b>\$164,485.94</b>

General Fund (10)

2513 Receiving and Disbursing Funds Services

Elementary

Secondary

Federal

Total

100 Personnel Services – Salaries

100 Personnel Services – Salaries

71,155.00

**Total Personnel Services – Salaries**

**\$71,155.00**

200 Personnel Services – Employee Benefits

210 Group Insurance – Contracted Provider

52,284.43

220 Social Security Contributions

5,443.45

230 PSERS Retirement Contributions

18,615.74

250 Unemployment Compensation

64.48

260 Workers' Compensation

494.20

**Total Personnel Services – Employee Benefits**

**\$76,902.30**

500 Other Purchased Services

580 Travel

148.43

**Total Other Purchased Services**

**\$148.43**

600 Supplies

610 General Supplies

7,825.08

**Total Supplies**

**\$7,825.08**

800 Other Objects

810 Dues and Fees

219.87

**Total Other Objects**

**\$219.87**

**Total 2513 Receiving and Disbursing Funds Services**

**\$156,250.68**

General Fund (10)

2514 Payroll Services

Elementary

Secondary

Federal

Total

100 Personnel Services – Salaries

100 Personnel Services – Salaries

124,299.20

**Total Personnel Services – Salaries**

**\$124,299.20**

200 Personnel Services – Employee Benefits

210 Group Insurance – Contracted Provider

23,854.01

220 Social Security Contributions

9,537.76

230 PSERS Retirement Contributions

32,611.09

250 Unemployment Compensation

112.04

260 Workers' Compensation

851.89

**Total Personnel Services – Employee Benefits**

**\$66,966.79**

300 Purchased Professional and Technical Services

340 Technical Services

17,150.09

**Total Purchased Professional and Technical Services**

**\$17,150.09**

600 Supplies

610 General Supplies

2,063.14

**Total Supplies**

**\$2,063.14**

**Total 2514 Payroll Services**

**\$210,479.22**

General Fund (10)

2519 Other Fiscal Services

Elementary

Secondary

Federal

Total

800 Other Objects

810 Dues and Fees

3,060.00

**Total Other Objects**

**\$3,060.00**

**Total 2519 Other Fiscal Services**

**\$3,060.00**

**General Fund (10)**

**2520 Purchasing Services**

Elementary                      Secondary                      Federal                      Total

**100 Personnel Services – Salaries**

100 Personnel Services – Salaries 113,400.00

**Total Personnel Services – Salaries \$113,400.00**

**200 Personnel Services – Employee Benefits**

210 Group Insurance – Contracted Provider 42,266.83

220 Social Security Contributions 8,678.06

230 PSERS Retirement Contributions 29,704.53

250 Unemployment Compensation 106.55

260 Workers' Compensation 787.69

**Total Personnel Services – Employee Benefits \$81,543.66**

**500 Other Purchased Services**

530 Communications 23,524.88

549 Other Advertising/Public Relations 7,288.24

580 Travel 65.55

**Total Other Purchased Services \$30,878.67**

**Total 2520 Purchasing Services \$225,822.33**

General Fund (10)

2540 Printing, Publishing and Duplicating Services

Elementary

Secondary

Federal

Total

100 Personnel Services – Salaries

100 Personnel Services – Salaries

42,636.47

**Total Personnel Services – Salaries**

**\$42,636.47**

200 Personnel Services – Employee Benefits

210 Group Insurance – Contracted Provider

20,531.02

220 Social Security Contributions

3,273.36

230 PSERS Retirement Contributions

11,125.07

250 Unemployment Compensation

39.02

260 Workers' Compensation

296.22

**Total Personnel Services – Employee Benefits**

**\$35,264.69**

600 Supplies

610 General Supplies

2,970.34

**Total Supplies**

**\$2,970.34**

**Total 2540 Printing, Publishing and Duplicating Services**

**\$80,871.50**

**General Fund (10)**

	<u>Elementary</u>	<u>Secondary</u>	<u>Federal</u>	<u>Total</u>
<b>2600 Operation and Maintenance of Plant Services</b>				
<b>100 Personnel Services – Salaries</b>				
100 Personnel Services – Salaries				4,118,892.24
<b>Total Personnel Services – Salaries</b>				<b>\$4,118,892.24</b>
<b>200 Personnel Services – Employee Benefits</b>				
210 Group Insurance – Contracted Provider				1,284,892.48
220 Social Security Contributions				314,839.62
230 PSERS Retirement Contributions				1,044,069.16
250 Unemployment Compensation				3,827.14
260 Workers' Compensation				28,544.65
<b>Total Personnel Services – Employee Benefits</b>				<b>\$2,676,173.05</b>
<b>300 Purchased Professional and Technical Services</b>				
330 Other Professional Services				26,616.60
390 Other Purchased Professional and Technical Services				53,913.04
<b>Total Purchased Professional and Technical Services</b>				<b>\$80,529.64</b>
<b>400 Purchased Property Services</b>				
410 Cleaning Services				88,612.64
420 Utility Services				963,910.40
430 Repairs and Maintenance Services				513,863.30
440 Rentals				28,666.22
460 Extermination Services				17,528.00
490 Other Purchased Property Services				44,687.24
<b>Total Purchased Property Services</b>				<b>\$1,657,267.80</b>
<b>500 Other Purchased Services</b>				
521 Fire Insurance				155,642.65
523 General Property and Liability Insurance				30,790.11
529 Other Insurance				28,495.54
530 Communications				124,977.82
580 Travel				26,915.95
<b>Total Other Purchased Services</b>				<b>\$366,822.07</b>
<b>600 Supplies</b>				
610 General Supplies	230,380.55	232,358.94		462,739.49
620 Energy				443,841.19
<b>Total Supplies</b>	<b>\$230,380.55</b>	<b>\$232,358.94</b>		<b>\$906,580.68</b>
<b>700 Property</b>				
760 Equipment – Replacement				14,120.00
<b>Total Property</b>				<b>\$14,120.00</b>
<b>800 Other Objects</b>				
810 Dues and Fees				815.90
<b>Total Other Objects</b>				<b>\$815.90</b>
<b>Total 2600 Operation and Maintenance of Plant Services</b>	<b>\$230,380.55</b>	<b>\$232,358.94</b>		<b>\$9,821,201.38</b>

General Fund (10)

2610 Supervision of Operation and Maintenance of Plant Services

Elementary

Secondary

Federal

Total

100 Personnel Services – Salaries

100 Personnel Services – Salaries

170,494.28

**Total Personnel Services – Salaries**

**\$170,494.28**

200 Personnel Services – Employee Benefits

210 Group Insurance – Contracted Provider

62,908.33

220 Social Security Contributions

12,944.48

230 PSERS Retirement Contributions

41,014.27

250 Unemployment Compensation

166.51

260 Workers' Compensation

1,198.36

**Total Personnel Services – Employee Benefits**

**\$118,231.95**

500 Other Purchased Services

530 Communications

121,944.02

580 Travel

6,821.65

**Total Other Purchased Services**

**\$128,765.67**

**Total 2610 Supervision of Operation and Maintenance of Plant Services**

**\$417,491.90**



General Fund (10)

2611 Supervision of Operation and Maintenance of Plant Services – Head of Component

Elementary

Secondary

Federal

Total

100 Personnel Services – Salaries

100 Personnel Services – Salaries

170,494.28

**Total Personnel Services – Salaries**

**\$170,494.28**

200 Personnel Services – Employee Benefits

210 Group Insurance – Contracted Provider

62,908.33

220 Social Security Contributions

12,944.48

230 PSERS Retirement Contributions

41,014.27

250 Unemployment Compensation

166.51

260 Workers' Compensation

1,198.36

**Total Personnel Services – Employee Benefits**

**\$118,231.95**

500 Other Purchased Services

530 Communications

121,944.02

580 Travel

6,821.65

**Total Other Purchased Services**

**\$128,765.67**

**Total 2611 Supervision of Operation and Maintenance of Plant Services – Head of Component**

**\$417,491.90**

**General Fund (10)**

	<u>Elementary</u>	<u>Secondary</u>	<u>Federal</u>	<u>Total</u>
<b>2620 Operation of Buildings Services</b>				
<b>100 Personnel Services – Salaries</b>				
100 Personnel Services – Salaries				3,267,437.62
<b>Total Personnel Services – Salaries</b>				<b>\$3,267,437.62</b>
<b>200 Personnel Services – Employee Benefits</b>				
210 Group Insurance – Contracted Provider				960,853.99
220 Social Security Contributions				250,899.70
230 PSERS Retirement Contributions				830,188.31
250 Unemployment Compensation				3,386.32
260 Workers' Compensation				22,747.14
<b>Total Personnel Services – Employee Benefits</b>				<b>\$2,068,075.46</b>
<b>300 Purchased Professional and Technical Services</b>				
330 Other Professional Services				26,616.60
390 Other Purchased Professional and Technical Services				5,000.00
<b>Total Purchased Professional and Technical Services</b>				<b>\$31,616.60</b>
<b>400 Purchased Property Services</b>				
410 Cleaning Services				88,537.64
420 Utility Services				963,583.29
430 Repairs and Maintenance Services				329,372.92
440 Rentals				1,858.00
460 Extermination Services				17,528.00
<b>Total Purchased Property Services</b>				<b>\$1,400,879.85</b>
<b>500 Other Purchased Services</b>				
521 Fire Insurance				155,642.65
523 General Property and Liability Insurance				30,790.11
529 Other Insurance				28,495.54
530 Communications				3,033.80
580 Travel				17,026.35
<b>Total Other Purchased Services</b>				<b>\$234,988.45</b>
<b>600 Supplies</b>				
610 General Supplies	198,116.46	200,094.88		398,211.34
620 Energy				432,806.93
<b>Total Supplies</b>	<b>\$198,116.46</b>	<b>\$200,094.88</b>		<b>\$831,018.27</b>
<b>800 Other Objects</b>				
810 Dues and Fees				415.90
<b>Total Other Objects</b>				<b>\$415.90</b>
<b>Total 2620 Operation of Buildings Services</b>	<b>\$198,116.46</b>	<b>\$200,094.88</b>		<b>\$7,834,432.15</b>

**General Fund (10)**

	<u>Elementary</u>	<u>Secondary</u>	<u>Federal</u>	<u>Total</u>
<b>2630 Care and Upkeep of Grounds Services</b>				
<b>100 Personnel Services – Salaries</b>				
100 Personnel Services – Salaries				337,116.42
<b>Total Personnel Services – Salaries</b>				<b>\$337,116.42</b>
<b>200 Personnel Services – Employee Benefits</b>				
210 Group Insurance – Contracted Provider				98,738.43
220 Social Security Contributions				24,665.67
230 PSERS Retirement Contributions				84,048.29
260 Workers' Compensation				2,221.37
<b>Total Personnel Services – Employee Benefits</b>				<b>\$209,673.76</b>
<b>400 Purchased Property Services</b>				
410 Cleaning Services				75.00
420 Utility Services				327.11
430 Repairs and Maintenance Services				6,525.53
<b>Total Purchased Property Services</b>				<b>\$6,927.64</b>
<b>600 Supplies</b>				
610 General Supplies	15,196.55	15,196.53		30,393.08
<b>Total Supplies</b>	<b>\$15,196.55</b>	<b>\$15,196.53</b>		<b>\$30,393.08</b>
<b>Total 2630 Care and Upkeep of Grounds Services</b>	<b>\$15,196.55</b>	<b>\$15,196.53</b>		<b>\$584,110.90</b>

LEA : 118408852 Wilkes-Barre Area SD

Printed 5/11/2017 10:48:28 AM

General Fund (10)

	<u>Elementary</u>	<u>Secondary</u>	<u>Federal</u>	<u>Total</u>
<b>2640 Care and Upkeep of Equipment Services</b>				
<b>400 <u>Purchased Property Services</u></b>				
430 Repairs and Maintenance Services				158,344.28
440 Rentals				26,808.22
<b>Total Purchased Property Services</b>				<b>\$185,152.50</b>
<b>700 <u>Property</u></b>				
760 Equipment – Replacement				14,120.00
<b>Total Property</b>				<b>\$14,120.00</b>
<b>Total 2640 Care and Upkeep of Equipment Services</b>				<b>\$199,272.50</b>

General Fund (10)

	<u>Elementary</u>	<u>Secondary</u>	<u>Federal</u>	<u>Total</u>
<b>2650 Vehicle Operation and Maintenance Services (Other Than Student Transportation Vehicles)</b>				
<b>400 Purchased Property Services</b>				
430 Repairs and Maintenance Services				19,620.57
<b>Total Purchased Property Services</b>				<b>\$19,620.57</b>
<b>600 Supplies</b>				
610 General Supplies	2,470.05	2,470.05		4,940.10
620 Energy				11,034.26
<b>Total Supplies</b>	<b>\$2,470.05</b>	<b>\$2,470.05</b>		<b>\$15,974.36</b>
<b>Total 2650 Vehicle Operation and Maintenance Services (Other Than Student Transportation Vehicles)</b>	<b>\$2,470.05</b>	<b>\$2,470.05</b>		<b>\$35,594.93</b>

**General Fund (10)**

**2660 Safety and Security Services**

**100 Personnel Services – Salaries**

	<u>Elementary</u>	<u>Secondary</u>	<u>Federal</u>	<u>Total</u>
100 Personnel Services – Salaries				343,843.92
<b>Total Personnel Services – Salaries</b>				<b>\$343,843.92</b>
<b>200 Personnel Services – Employee Benefits</b>				
210 Group Insurance – Contracted Provider				162,391.73
220 Social Security Contributions				26,329.77
230 PSERS Retirement Contributions				88,818.29
250 Unemployment Compensation				274.31
260 Workers' Compensation				2,377.78
<b>Total Personnel Services – Employee Benefits</b>				<b>\$280,191.88</b>
<b>300 Purchased Professional and Technical Services</b>				
390 Other Purchased Professional and Technical Services				48,913.04
<b>Total Purchased Professional and Technical Services</b>				<b>\$48,913.04</b>
<b>400 Purchased Property Services</b>				
490 Other Purchased Property Services				44,687.24
<b>Total Purchased Property Services</b>				<b>\$44,687.24</b>
<b>500 Other Purchased Services</b>				
580 Travel				3,067.95
<b>Total Other Purchased Services</b>				<b>\$3,067.95</b>
<b>600 Supplies</b>				
610 General Supplies	14,597.49	14,597.48		29,194.97
<b>Total Supplies</b>	<b>\$14,597.49</b>	<b>\$14,597.48</b>		<b>\$29,194.97</b>
<b>800 Other Objects</b>				
810 Dues and Fees				400.00
<b>Total Other Objects</b>				<b>\$400.00</b>
<b>Total 2660 Safety and Security Services</b>	<b>\$14,597.49</b>	<b>\$14,597.48</b>		<b>\$750,299.00</b>

General Fund (10)

	<u>Elementary</u>	<u>Secondary</u>	<u>Federal</u>	<u>Total</u>
<b>2700 Student Transportation Services</b>				
<b>100 Personnel Services – Salaries</b>				
100 Personnel Services – Salaries				68,033.97
<b>Total Personnel Services – Salaries</b>				<b>\$68,033.97</b>
<b>200 Personnel Services – Employee Benefits</b>				
210 Group Insurance – Contracted Provider				34,273.47
220 Social Security Contributions				5,204.59
230 PSERS Retirement Contributions				17,921.32
250 Unemployment Compensation				61.98
260 Workers' Compensation				469.81
<b>Total Personnel Services – Employee Benefits</b>				<b>\$57,931.17</b>
<b>500 Other Purchased Services</b>				
513 Contracted Carriers				3,219,899.90
515 Public Carriers				54,167.07
516 Student Transportation Services From the IU				866,503.11
<b>Total Other Purchased Services</b>				<b>\$4,140,570.08</b>
<b>600 Supplies</b>				
610 General Supplies				163.55
<b>Total Supplies</b>				<b>\$163.55</b>
<b>Total 2700 Student Transportation Services</b>				<b>\$4,266,698.77</b>

**General Fund (10)**

**2720 Vehicle Operation Services**

Elementary

Secondary

Federal

Total

**100 Personnel Services – Salaries**

100 Personnel Services – Salaries

68,033.97

**Total Personnel Services – Salaries**

**\$68,033.97**

**200 Personnel Services – Employee Benefits**

210 Group Insurance – Contracted Provider

34,273.47

220 Social Security Contributions

5,204.59

230 PSERS Retirement Contributions

17,921.32

250 Unemployment Compensation

61.98

260 Workers' Compensation

469.81

**Total Personnel Services – Employee Benefits**

**\$57,931.17**

**500 Other Purchased Services**

513 Contracted Carriers

2,457,552.14

515 Public Carriers

52,276.45

516 Student Transportation Services From the IU

847,170.41

**Total Other Purchased Services**

**\$3,356,999.00**

**600 Supplies**

610 General Supplies

163.55

**Total Supplies**

**\$163.55**

**Total 2720 Vehicle Operation Services**

**\$3,483,127.69**



General Fund (10)

2750 Nonpublic Transportation

Elementary

Secondary

Federal

Total

500 Other Purchased Services

513 Contracted Carriers

762,347.76

515 Public Carriers

1,890.62

516 Student Transportation Services From the IU

19,332.70

**Total Other Purchased Services**

**\$783,571.08**

**Total 2750 Nonpublic Transportation**

**\$783,571.08**

**General Fund (10)**

	<u>Elementary</u>	<u>Secondary</u>	<u>Federal</u>	<u>Total</u>
<b>2800 Support Services – Central</b>				
<b>100 Personnel Services – Salaries</b>				
100 Personnel Services – Salaries			128,927.25	254,556.37
<b>Total Personnel Services – Salaries</b>			<b>\$128,927.25</b>	<b>\$254,556.37</b>
<b>200 Personnel Services – Employee Benefits</b>				
210 Group Insurance – Contracted Provider			35,107.99	62,565.49
220 Social Security Contributions			9,867.05	19,480.35
230 PSERS Retirement Contributions			19,274.07	76,370.76
250 Unemployment Compensation				242.22
260 Workers' Compensation			895.07	1,751.61
<b>Total Personnel Services – Employee Benefits</b>			<b>\$65,144.18</b>	<b>\$160,410.43</b>
<b>300 Purchased Professional and Technical Services</b>				
330 Other Professional Services				39,647.50
340 Technical Services				341.00
390 Other Purchased Professional and Technical Services				4,200.00
<b>Total Purchased Professional and Technical Services</b>				<b>\$44,188.50</b>
<b>500 Other Purchased Services</b>				
580 Travel			3,151.93	4,458.27
<b>Total Other Purchased Services</b>			<b>\$3,151.93</b>	<b>\$4,458.27</b>
<b>600 Supplies</b>				
610 General Supplies				3,003.16
630 Food				66.50
<b>Total Supplies</b>				<b>\$3,069.66</b>
<b>Total 2800 Support Services – Central</b>			<b>\$197,223.36</b>	<b>\$466,683.23</b>

General Fund (10)

2820 Information Services

Elementary

Secondary

Federal

Total

300 Purchased Professional and Technical Services

340 Technical Services

341.00

**Total Purchased Professional and Technical Services**

**\$341.00**

**Total 2820 Information Services**

**\$341.00**

LEA : 118408852 Wilkes-Barre Area SD

Printed 5/11/2017 10:48:28 AM

General Fund (10)

2823 Public Information Services

Elementary

Secondary

Federal

Total

300 Purchased Professional and Technical Services

340 Technical Services

341.00

**Total Purchased Professional and Technical Services**

**\$341.00**

**Total 2823 Public Information Services**

**\$341.00**

General Fund (10)

2830 Staff Services

Elementary

Secondary

Federal

Total

100 Personnel Services – Salaries

100 Personnel Services – Salaries

125,629.12

**Total Personnel Services – Salaries**

**\$125,629.12**

200 Personnel Services – Employee Benefits

210 Group Insurance – Contracted Provider

27,457.59

220 Social Security Contributions

9,613.30

230 PSERS Retirement Contributions

42,605.99

250 Unemployment Compensation

128.34

260 Workers' Compensation

856.54

**Total Personnel Services – Employee Benefits**

**\$80,661.76**

300 Purchased Professional and Technical Services

330 Other Professional Services

39,647.50

390 Other Purchased Professional and Technical Services

4,200.00

**Total Purchased Professional and Technical Services**

**\$43,847.50**

500 Other Purchased Services

580 Travel

1,306.34

**Total Other Purchased Services**

**\$1,306.34**

600 Supplies

610 General Supplies

3,003.16

630 Food

66.50

**Total Supplies**

**\$3,069.66**

**Total 2830 Staff Services**

**\$254,514.38**

General Fund (10)

2832 Recruitment and Placement Services

Elementary

Secondary

Federal

Total

100 Personnel Services – Salaries

100 Personnel Services – Salaries

125,629.12

**Total Personnel Services – Salaries**

**\$125,629.12**

200 Personnel Services – Employee Benefits

210 Group Insurance – Contracted Provider

27,457.59

220 Social Security Contributions

9,613.30

230 PSERS Retirement Contributions

42,605.99

250 Unemployment Compensation

128.34

260 Workers' Compensation

856.54

**Total Personnel Services – Employee Benefits**

**\$80,661.76**

300 Purchased Professional and Technical Services

330 Other Professional Services

16,600.00

**Total Purchased Professional and Technical Services**

**\$16,600.00**

500 Other Purchased Services

580 Travel

1,306.34

**Total Other Purchased Services**

**\$1,306.34**

600 Supplies

610 General Supplies

3,003.16

**Total Supplies**

**\$3,003.16**

**Total 2832 Recruitment and Placement Services**

**\$227,200.38**

General Fund (10)

	<u>Elementary</u>	<u>Secondary</u>	<u>Federal</u>	<u>Total</u>
<b>2834 Staff Development Services – Non-Instructional, Certified Staff Only</b>				
<b>300 <u>Purchased Professional and Technical Services</u></b>				
390 Other Purchased Professional and Technical Services				4,200.00
<b>Total Purchased Professional and Technical Services</b>				<b>\$4,200.00</b>
<b>600 <u>Supplies</u></b>				
630 Food				66.50
<b>Total Supplies</b>				<b>\$66.50</b>
<b>Total 2834 Staff Development Services – Non-Instructional, Certified Staff Only</b>				<b>\$4,266.50</b>

General Fund (10)

2835 Health Services

Elementary

Secondary

Federal

Total

300 Purchased Professional and Technical Services

330 Other Professional Services

23,047.50

**Total Purchased Professional and Technical Services**

**\$23,047.50**

**Total 2835 Health Services**

**\$23,047.50**



**General Fund (10)**

**2850 State and Federal Agency Liaison Services**

	<u>Elementary</u>	<u>Secondary</u>	<u>Federal</u>	<u>Total</u>
<b>100 Personnel Services – Salaries</b>				
100 Personnel Services – Salaries			128,927.25	128,927.25
<b>Total Personnel Services – Salaries</b>			<b>\$128,927.25</b>	<b>\$128,927.25</b>
<b>200 Personnel Services – Employee Benefits</b>				
210 Group Insurance – Contracted Provider			35,107.99	35,107.90
220 Social Security Contributions			9,867.05	9,867.05
230 PSERS Retirement Contributions			19,274.07	33,764.77
250 Unemployment Compensation				113.88
260 Workers' Compensation			895.07	895.07
<b>Total Personnel Services – Employee Benefits</b>			<b>\$65,144.18</b>	<b>\$79,748.67</b>
<b>500 Other Purchased Services</b>				
580 Travel			3,151.93	3,151.93
<b>Total Other Purchased Services</b>			<b>\$3,151.93</b>	<b>\$3,151.93</b>
<b>Total 2850 State and Federal Agency Liaison Services</b>			<b>\$197,223.36</b>	<b>\$211,827.85</b>

General Fund (10)

2900 Other Support Services

Elementary

Secondary

Federal

Total

500 Other Purchased Services

595 IU Payments By Withholding

126,431.58

**Total Other Purchased Services**

**\$126,431.58**

**Total 2900 Other Support Services**

**\$126,431.58**

General Fund (10)

2910 Support Services Not Listed Elsewhere In the 2000 Series

Elementary

Secondary

Federal

Total

500 Other Purchased Services

595 IU Payments By Withholding

126,431.58

**Total Other Purchased Services**

**\$126,431.58**

**Total 2910 Support Services Not Listed Elsewhere In the 2000 Series**

**\$126,431.58**

**General Fund (10)**

<b>3000 Operation of Non-Instructional Services</b>	<b><u>Total</u></b>
<b>100 Personnel Services – Salaries</b>	
100 Personnel Services – Salaries	1,081,780.98
<b>Total Personnel Services – Salaries</b>	<b>\$1,081,780.98</b>
<b>200 Personnel Services – Employee Benefits</b>	
210 Group Insurance – Contracted Provider	38.82
220 Social Security Contributions	82,758.08
230 PSERS Retirement Contributions	202,585.68
250 Unemployment Compensation	983.65
260 Workers’ Compensation	7,284.11
<b>Total Personnel Services – Employee Benefits</b>	<b>\$293,650.34</b>
<b>300 Purchased Professional and Technical Services</b>	
330 Other Professional Services	127,295.41
390 Other Purchased Professional and Technical Services	88,985.00
<b>Total Purchased Professional and Technical Services</b>	<b>\$216,280.41</b>
<b>400 Purchased Property Services</b>	
410 Cleaning Services	1,598.00
420 Utility Services	8,072.33
430 Repairs and Maintenance Services	79,693.76
440 Rentals	14,943.15
<b>Total Purchased Property Services</b>	<b>\$104,307.24</b>
<b>500 Other Purchased Services</b>	
510 Student Transportation Services	195,174.52
520 Insurance – General	84,444.00
580 Travel	35,368.23
599 Other Miscellaneous Purchased Services	1,863.20
<b>Total Other Purchased Services</b>	<b>\$316,849.95</b>
<b>600 Supplies</b>	
610 General Supplies	137,728.68
<b>Total Supplies</b>	<b>\$137,728.68</b>
<b>700 Property</b>	
750 Equipment – Original and Additional	(189.00)
<b>Total Property</b>	<b>(\$189.00)</b>
<b>800 Other Objects</b>	
810 Dues and Fees	35,696.12
890 Miscellaneous Expenditures	95,021.00
<b>Total Other Objects</b>	<b>\$130,717.12</b>
<b>Total 3000 Operation of Non-Instructional Services</b>	<b>\$2,281,125.72</b>

**General Fund (10)**

**3200 Student Activities**

Elementary                      Secondary                      Federal                      Total

<b>100</b>	<b><u>Personnel Services – Salaries</u></b>				
	100 Personnel Services – Salaries				819,789.34
<b>Total Personnel Services – Salaries</b>					<b>\$819,789.34</b>
<b>200</b>	<b><u>Personnel Services – Employee Benefits</u></b>				
	210 Group Insurance – Contracted Provider				38.82
	220 Social Security Contributions				62,717.00
	230 PSERS Retirement Contributions				198,956.45
	250 Unemployment Compensation				751.84
	260 Workers' Compensation				5,474.01
<b>Total Personnel Services – Employee Benefits</b>					<b>\$267,938.12</b>
<b>300</b>	<b><u>Purchased Professional and Technical Services</u></b>				
	330 Other Professional Services				127,295.41
	390 Other Purchased Professional and Technical Services				88,985.00
<b>Total Purchased Professional and Technical Services</b>					<b>\$216,280.41</b>
<b>400</b>	<b><u>Purchased Property Services</u></b>				
	410 Cleaning Services				1,598.00
	420 Utility Services				8,072.33
	430 Repairs and Maintenance Services				79,693.76
	440 Rentals				14,943.15
<b>Total Purchased Property Services</b>					<b>\$104,307.24</b>
<b>500</b>	<b><u>Other Purchased Services</u></b>				
	510 Student Transportation Services				195,174.52
	520 Insurance – General				84,444.00
	580 Travel				31,758.95
	599 Other Miscellaneous Purchased Services				1,863.20
<b>Total Other Purchased Services</b>					<b>\$313,240.67</b>
<b>600</b>	<b><u>Supplies</u></b>				
	610 General Supplies				136,549.55
<b>Total Supplies</b>					<b>\$136,549.55</b>
<b>700</b>	<b><u>Property</u></b>				
	750 Equipment – Original and Additional				(189.00)
<b>Total Property</b>					<b>(\$189.00)</b>
<b>800</b>	<b><u>Other Objects</u></b>				
	810 Dues and Fees				35,696.12
<b>Total Other Objects</b>					<b>\$35,696.12</b>
<b>Total 3200 Student Activities</b>					<b>\$1,893,612.45</b>

**General Fund (10)**

	<u>Elementary</u>	<u>Secondary</u>	<u>Federal</u>	<u>Total</u>
<b>3300 Community Services</b>				
<b>100 Personnel Services – Salaries</b>				
100 Personnel Services – Salaries				261,991.64
<b>Total Personnel Services – Salaries</b>				<b>\$261,991.64</b>
<b>200 Personnel Services – Employee Benefits</b>				
220 Social Security Contributions				20,041.08
230 PSERS Retirement Contributions				3,629.23
250 Unemployment Compensation				231.81
260 Workers' Compensation				1,810.10
<b>Total Personnel Services – Employee Benefits</b>				<b>\$25,712.22</b>
<b>500 Other Purchased Services</b>				
580 Travel			3,609.28	3,609.28
<b>Total Other Purchased Services</b>			<b>\$3,609.28</b>	<b>\$3,609.28</b>
<b>600 Supplies</b>				
610 General Supplies			397.12	1,179.13
<b>Total Supplies</b>			<b>\$397.12</b>	<b>\$1,179.13</b>
<b>800 Other Objects</b>				
890 Miscellaneous Expenditures				95,021.00
<b>Total Other Objects</b>				<b>\$95,021.00</b>
<b>Total 3300 Community Services</b>			<b>\$4,006.40</b>	<b>\$387,513.27</b>

**General Fund (10)**

**5000 Other Expenditures and Financing Uses**

**Total**

**800 Other Objects**

830 Interest 89,678.73

880 Refunds of Prior Years' Receipts 257,784.91

**Total Other Objects \$347,463.64**

**900 Other Uses of Funds**

930 Fund Transfers 2,927,147.00

**Total Other Uses of Funds \$2,927,147.00**

**Total 5000 Other Expenditures and Financing Uses \$3,274,610.64**

LEA : 118408852 Wilkes-Barre Area SD

Printed 5/11/2017 10:48:32 AM

General Fund (10)

5100 Debt Service / Other Expenditures and Financing Uses

Elementary

Secondary

Federal

Total

800 Other Objects

830 Interest

89,678.73

880 Refunds of Prior Years' Receipts

257,784.91

**Total Other Objects**

**\$347,463.64**

**Total 5100 Debt Service / Other Expenditures and Financing Uses**

**\$347,463.64**



LEA : 118408852 Wilkes-Barre Area SD

Printed 5/11/2017 10:48:32 AM

General Fund (10)

5110 Debt Service

800 Other Objects

830 Interest

**Total Other Objects**

**Total 5110 Debt Service**

Elementary

Secondary

Federal

Total

89,678.73

**\$89,678.73**

**\$89,678.73**

LEA : 118408852 Wilkes-Barre Area SD

Printed 5/11/2017 10:48:32 AM

General Fund (10)

5130 Refund of Prior Year Revenues / Receipts	<u>Elementary</u>	<u>Secondary</u>	<u>Federal</u>	<u>Total</u>
800 <u>Other Objects</u>				
880 Refunds of Prior Years' Receipts				257,784.91
<b>Total Other Objects</b>				<b>\$257,784.91</b>
<b>Total 5130 Refund of Prior Year Revenues / Receipts</b>				<b>\$257,784.91</b>

General Fund (10)

	<u>Elementary</u>	<u>Secondary</u>	<u>Federal</u>	<u>Total</u>
<b>5200 Interfund Transfers – Out</b>				
<b>900 <u>Other Uses of Funds</u></b>				
930 Fund Transfers				2,927,147.00
<b>Total Other Uses of Funds</b>				<b>\$2,927,147.00</b>
<b>Total 5200 Interfund Transfers – Out</b>				<b>\$2,927,147.00</b>

General Fund (10)

5240 Debt Service Fund Transfers

Elementary

Secondary

Federal

Total

900 Other Uses of Funds

930 Fund Transfers

2,827,147.00

**Total Other Uses of Funds**

**\$2,827,147.00**

**Total 5240 Debt Service Fund Transfers**

**\$2,827,147.00**

LEA : 118408852 Wilkes-Barre Area SD

Printed 5/11/2017 10:48:32 AM

General Fund (10)

5270 Trust and Agency Fund Transfers

Elementary

Secondary

Federal

Total

900 Other Uses of Funds

930 Fund Transfers

72,500.00

**Total Other Uses of Funds**

**\$72,500.00**

**Total 5270 Trust and Agency Fund Transfers**

**\$72,500.00**

General Fund (10)

5280 Activity Fund Transfers

Elementary

Secondary

Federal

Total

900 Other Uses of Funds

930 Fund Transfers

27,500.00

**Total Other Uses of Funds**

**\$27,500.00**

**Total 5280 Activity Fund Transfers**

**\$27,500.00**

**Other Capital Projects Fund (39)**

**2000 Support Services**

**800 Other Objects**

810 Dues and Fees

**Total Other Objects**

**Total 2000 Support Services**

Total

88.00

**\$88.00**

**\$88.00**

LEA : 118408852 Wilkes-Barre Area SD

Printed 5/11/2017 10:48:29 AM

Other Capital Projects Fund (39)

2500 Support Services – Business

Elementary

Secondary

Federal

Total

800 Other Objects

810 Dues and Fees

88.00

**Total Other Objects**

**\$88.00**

**Total 2500 Support Services – Business**

**\$88.00**



LEA : 118408852 Wilkes-Barre Area SD

Printed 5/11/2017 10:48:29 AM

Other Capital Projects Fund (39)

2510 Fiscal Services

Elementary

Secondary

Federal

Total

800 Other Objects

810 Dues and Fees

88.00

**Total Other Objects**

**\$88.00**

**Total 2510 Fiscal Services**

**\$88.00**

LEA : 118408852 Wilkes-Barre Area SD

Printed 5/11/2017 10:48:29 AM

Other Capital Projects Fund (39)

2513 Receiving and Disbursing Funds Services

Elementary

Secondary

Federal

Total

800 Other Objects

810 Dues and Fees

88.00

**Total Other Objects**

**\$88.00**

**Total 2513 Receiving and Disbursing Funds Services**

**\$88.00**

**Other Capital Projects Fund (39)**

**4000 Facilities Acquisition, Construction and Improvement Services**

**Total**

**300 Purchased Professional and Technical Services**

390 Other Purchased Professional and Technical Services 1,275.00

**Total Purchased Professional and Technical Services \$1,275.00**

**400 Purchased Property Services**

430 Repairs and Maintenance Services 480,432.00

450 Construction Services 7,863,671.00

**Total Purchased Property Services \$8,344,103.00**

**600 Supplies**

610 General Supplies 92,409.00

**Total Supplies \$92,409.00**

**700 Property**

710 Land and Improvements 439,743.00

760 Equipment – Replacement 105,023.00

**Total Property \$544,766.00**

**Total 4000 Facilities Acquisition, Construction and Improvement Services \$8,982,553.00**

LEA : 118408852 Wilkes-Barre Area SD

Printed 5/11/2017 10:48:31 AM

Other Capital Projects Fund (39)

4100 Site Acquisition Services – Original and Additional

Elementary

Secondary

Federal

Total

700 Property

710 Land and Improvements

439,743.00

**Total Property**

**\$439,743.00**

**Total 4100 Site Acquisition Services – Original and Additional**

**\$439,743.00**

LEA : 118408852 Wilkes-Barre Area SD

Printed 5/11/2017 10:48:31 AM

Other Capital Projects Fund (39)

4500 Building Acquisition and Construction Services – Original and Additional

Elementary

Secondary

Federal

Total

400 Purchased Property Services

450 Construction Services

2,093,800.00

**Total Purchased Property Services**

**\$2,093,800.00**

**Total 4500 Building Acquisition and Construction Services – Original and Additional**

**\$2,093,800.00**

Other Capital Projects Fund (39)

4600 Existing Building Improvement Services

Elementary

Secondary

Federal

Total

300 Purchased Professional and Technical Services

390 Other Purchased Professional and Technical Services

1,275.00

**Total Purchased Professional and Technical Services**

**\$1,275.00**

400 Purchased Property Services

430 Repairs and Maintenance Services

480,432.00

450 Construction Services

5,769,871.00

**Total Purchased Property Services**

**\$6,250,303.00**

600 Supplies

610 General Supplies

92,409.00

**Total Supplies**

**\$92,409.00**

700 Property

760 Equipment – Replacement

105,023.00

**Total Property**

**\$105,023.00**

**Total 4600 Existing Building Improvement Services**

**\$6,449,010.00**

**Debt Service Fund (40)**

**5000 Other Expenditures and Financing Uses**

**Total**

**800 Other Objects**

830 Interest

834,415.20

**Total Other Objects**

**\$834,415.20**

**900 Other Uses of Funds**

910 Redemption of Principal

1,992,778.80

**Total Other Uses of Funds**

**\$1,992,778.80**

**Total 5000 Other Expenditures and Financing Uses**

**\$2,827,194.00**

Debt Service Fund (40)

5100 Debt Service / Other Expenditures and Financing Uses	<u>Elementary</u>	<u>Secondary</u>	<u>Federal</u>	<u>Total</u>
800 <u>Other Objects</u>				
830 Interest				834,415.20
<b>Total Other Objects</b>				<b>\$834,415.20</b>
900 <u>Other Uses of Funds</u>				
910 Redemption of Principal				1,992,778.80
<b>Total Other Uses of Funds</b>				<b>\$1,992,778.80</b>
<b>Total 5100 Debt Service / Other Expenditures and Financing Uses</b>				<b>\$2,827,194.00</b>



Debt Service Fund (40)

	<u>Elementary</u>	<u>Secondary</u>	<u>Federal</u>	<u>Total</u>
<b>5110 Debt Service</b>				
<b>800 Other Objects</b>				
830 Interest				834,415.20
<b>Total Other Objects</b>				<b>\$834,415.20</b>
<b>900 Other Uses of Funds</b>				
910 Redemption of Principal				1,992,778.80
<b>Total Other Uses of Funds</b>				<b>\$1,992,778.80</b>
<b>Total 5110 Debt Service</b>				<b>\$2,827,194.00</b>

	<u>General Fund(10)</u>	<u>Public Purpose Trust(27)</u>	<u>Other Compt Approved (28)</u>	<u>Athletic / Activity(29)</u>	<u>Capital Reserve (690. 1850)(31)</u>
<b>1000 Instruction</b>					
1100 Regular Programs - Elementary / Secondary	54,179,200.62				
1200 Special Programs - Elementary / Secondary	18,756,744.55				
1300 Vocational Education	4,218,680.82				
1400 Other Instructional Programs - Elementary / Secondary	1,595,101.56				
<b>Total Instruction</b>	<b>\$78,749,727.55</b>				
<b>2000 Support Services</b>					
2100 Support Services - Students	3,201,661.84				
2200 Support Services - Instructional Staff	3,743,782.57				
2300 Support Services - Administration	5,629,956.99				
2400 Support Services - Pupil Health	2,074,400.35				
2500 Support Services - Business	1,083,189.97				
2600 Operation and Maintenance of Plant Services	9,821,201.38				
2700 Student Transportation Services	4,266,698.77				
2800 Support Services - Central	466,683.23				
2900 Other Support Services	126,431.58				
<b>Total Support Services</b>	<b>\$30,414,006.68</b>				
<b>3000 Operation of Non-Instructional Services</b>					
3200 Student Activities	1,893,612.45				
3300 Community Services	387,513.27				
<b>Total Operation of Non-Instructional Services</b>	<b>\$2,281,125.72</b>				
<b>4000 Facilities Acquisition, Construction and Improvement Services</b>					
4100 Site Acquisition Services - Original and Additional					
4500 Building Acquisition and Construction Services - Original and Additional					
4600 Existing Building Improvement Services					
<b>Total Facilities Acquisition, Construction and Improvement Services</b>					
<b>5000 Other Expenditures and Financing Uses</b>					
5100 Debt Service / Other Expenditures and Financing Uses	347,463.64				
5200 Interfund Transfers - Out	2,927,147.00				
<b>Total Other Expenditures and Financing Uses</b>	<b>\$3,274,610.64</b>				
<b>TOTAL ACTUAL EXPENDITURES &amp; OTHER FINANCING USES</b>	<b>\$114,719,470.59</b>				

	<u>Capital Reserve (1431)(32)</u>	<u>Other Capital Projects Fund(39)</u>	<u>Debt Service(40)</u>	<u>Permanent(90)</u>	<u>Total</u>
<b>1000 Instruction</b>					
1100 Regular Programs - Elementary / Secondary					54,179,200.62
1200 Special Programs - Elementary / Secondary					18,756,744.55
1300 Vocational Education					4,218,680.82
1400 Other Instructional Programs - Elementary / Secondary					1,595,101.56
<b>Total Instruction</b>					<b>\$78,749,727.55</b>
<b>2000 Support Services</b>					
2100 Support Services - Students					3,201,661.84
2200 Support Services - Instructional Staff					3,743,782.57
2300 Support Services - Administration					5,629,956.99
2400 Support Services - Pupil Health					2,074,400.35
2500 Support Services - Business		88.00			1,083,277.97
2600 Operation and Maintenance of Plant Services					9,821,201.38
2700 Student Transportation Services					4,266,698.77
2800 Support Services - Central					466,683.23
2900 Other Support Services					126,431.58
<b>Total Support Services</b>		<b>\$88.00</b>			<b>\$30,414,094.68</b>
<b>3000 Operation of Non-Instructional Services</b>					
3200 Student Activities					1,893,612.45
3300 Community Services					387,513.27
<b>Total Operation of Non-Instructional Services</b>					<b>\$2,281,125.72</b>
<b>4000 Facilities Acquisition, Construction and Improvement Services</b>					
4100 Site Acquisition Services - Original and Additional		439,743.00			439,743.00
4500 Building Acquisition and Construction Services - Original and Additional		2,093,800.00			2,093,800.00
4600 Existing Building Improvement Services		6,449,010.00			6,449,010.00
<b>Total Facilities Acquisition, Construction and Improvement Services</b>		<b>\$8,982,553.00</b>			<b>\$8,982,553.00</b>
<b>5000 Other Expenditures and Financing Uses</b>					
5100 Debt Service / Other Expenditures and Financing Uses			2,827,194.00		3,174,657.64
5200 Interfund Transfers - Out					2,927,147.00
<b>Total Other Expenditures and Financing Uses</b>			<b>\$2,827,194.00</b>		<b>\$6,101,804.64</b>
<b>TOTAL ACTUAL EXPENDITURES &amp; OTHER FINANCING USES</b>		<b>\$8,982,641.00</b>	<b>\$2,827,194.00</b>		<b>\$126,529,305.59</b>

LEA : 118408852 Wilkes-Barre Area SD

Printed 5/11/2017 10:48:37 AM

**PSERS Salary Data (Salary Data should relate to the General Fund only)**

<b>Amount Description</b>	<b>Amount</b>
Total Salary Base for salaries subject to PSERS withholding	46,782,683.95
Total Federally Funded salaries subject to PSERS withholding	2,706,720.26
	<hr/>

**Title I Expenditure Data**

<b>Amount Description</b>	<b>Amount</b>
Expenditures Funded with Current Title I Funds	2,745,901.73
Expenditures Funded with Carry over Title I Funds	486,772.00
	<hr/>
<b>Total Title I Expenditure Data</b>	<b>\$3,232,673.73</b>
	<hr/>

**Title I ARRA Amount**

<b>Amount Description</b>	<b>Amount</b>
Portion of Total Title I Expenditures funded with ARRA Title I	<hr/>

**Benefits for Staff Relative to Collective Bargaining Agreements**

	OBJECT	COVERED	NOT COVERED	TOTAL
<b>10 General Fund</b>	No Self Insurance data to report			
	211 Medical Insurance	12,655,541.14		12,655,541.14
	212 Dental Insurance	591,435.35		591,435.35
	215 Eye Care Insurance	58,820.36		58,820.36
	216 Prescription Insurance			
	271 Self-Insurance Medical Benefits			
	272 Self-Insurance Dental Benefits			
	275 Self-Insurance Eye Care Benefits			
	276 Self-Insurance Prescription Benefits			
	<b>FUND TOTAL</b>		<b>\$13,305,796.85</b>	
<b>50 Enterprise Fund</b>	No Self Insurance data to report			
	211 Medical Insurance	163,581.32		163,581.32
	212 Dental Insurance	7,644.70		7,644.70
	215 Eye Care Insurance	760.29		760.29
	216 Prescription Insurance			
	271 Self-Insurance Medical Benefits			
	272 Self-Insurance Dental Benefits			
	275 Self-Insurance Eye Care Benefits			
	276 Self-Insurance Prescription Benefits			
	<b>FUND TOTAL</b>		<b>\$171,986.31</b>	
<b>60 Internal Service Fund</b>	No Self Insurance data to report			
	211 Medical Insurance			
	212 Dental Insurance			
	215 Eye Care Insurance			
	216 Prescription Insurance			
	271 Self-Insurance Medical Benefits			
	272 Self-Insurance Dental Benefits			
	275 Self-Insurance Eye Care Benefits			
	276 Self-Insurance Prescription Benefits			
	<b>FUND TOTAL</b>			
<b>Total of All Funds</b>		<b>\$13,477,783.16</b>		<b>\$13,477,783.16</b>

LEA : 118408852 Wilkes-Barre Area SD

Printed 5/11/2017 10:48:38 AM

Function	Special Education (Prior Year)	Nonspecial Education (Prior Year)	Total (Prior Year)	Special Education (Current Year)	Nonspecial Education (Current Year)	Total (Current Year)
2120 Guidance Services		1,685,010.88	1,685,010.88		1,832,407.62	1,832,407.62
2140 Psychological Services		472,415.28	472,415.28		528,930.18	528,930.18
2150 Speech Pathology and Audiology Services						
2160 Social Work Services						
2260 Instruction and Curriculum Development Services		1,346,691.58	1,346,691.58		1,466,058.27	1,466,058.27
2350 Legal and Accounting Services	37,987.52	203,982.23	241,969.75	33,699.90	221,379.37	255,079.27
2420 Medical Services		42,724.57	42,724.57		40,947.31	40,947.31
2440 Nursing Services	317,546.00	1,279,370.39	1,596,916.39	657,676.17	1,043,118.31	1,700,794.48
2700 Student Transportation Services	821,759.39	3,233,478.32	4,055,237.71	866,503.11	3,400,195.66	4,266,698.77
<b>Total</b>	<b>\$1,177,292.91</b>	<b>\$8,263,673.25</b>	<b>\$9,440,966.16</b>	<b>\$1,557,879.18</b>	<b>\$8,533,036.72</b>	<b>\$10,090,915.90</b>

(PRINCIPAL AMOUNTS ONLY)

**ALL GOVERNMENTAL FUND TYPES**

	Short-Term Borrowing	General Obligation Bonds/Notes	Authority Building Obligations	Other Long-Term Debt	Other Post-Employment Benefits (OPEB)	Compensated Absences	Net Pension Liability	Total
1. Debt at Beginning of Fiscal Year		19,522,778.80		50,000.00	7,248,955.00	1,469,736.62	147,122,000.00	175,413,470.42
2. Additional Debt Incurred During Year				9,450,000.00	3,548,582.00		29,215,000.00	42,213,582.00
3. Retirements and Repayments		1,992,778.80			2,029,527.00	67,988.65	9,920,000.00	14,010,294.45
4. Debt at End of Fiscal Year		17,530,000.00		9,500,000.00	8,768,010.00	1,401,747.97	166,417,000.00	203,616,757.97
5. Accreted Interest at End Of Fiscal Year								
6. Total Debt and Accreted Interest		17,530,000.00		9,500,000.00	8,768,010.00	1,401,747.97	166,417,000.00	203,616,757.97
7. Current Portion P&I - Due within 1 year		2,935,000.00		9,500,000.00	1,600,000.00			14,035,000.00
8. Interest Paid during current fiscal year		835,656.00		89,678.73				925,334.73

(PRINCIPAL AMOUNTS ONLY)

**ALL PROPRIETARY FUND TYPES**

- 1. Debt at Beginning of Fiscal Year
- 2. Additional Debt Incurred During Year
- 3. Retirements and Repayments
- 4. Debt at End of Fiscal Year
- 5. Accreted Interest at End Of Fiscal Year
- 6. Total Debt and Accreted Interest
- 7. Current Portion P&I - Due within 1 year
- 8. Interest Paid during current fiscal year

**Total Principal and Interest Payments Made by Your School - All Funds**

Function	Fund		Principal (910)	Principal (920)	Interest (830)	Total (Principal +Interest)	Misc Other Uses (990)
5110	10	General Fund			89,678.73	89,678.73	
5110	20	Special Revenue Funds					
5110	30	Capital Projects Funds					
5110	40	Debt Service Fund	1,992,778.80		834,415.20	2,827,194.00	
5110	90	Permanent Fund					
5120	10	General Fund					
5120	20	Special Revenue Funds					
5120	30	Capital Projects Funds					
5120	40	Debt Service Fund					

<b>Total Debt Payments - Governmental Funds</b>			<b>\$1,992,778.80</b>		<b>\$924,093.93</b>	<b>\$2,916,872.73</b>	
---	--	--	-----------------------	--	---------------------	-----------------------	--

Function	Fund		Principal (910)	Principal (920)	Interest (830)	Total (Principal +Interest)
5110	50	Enterprise Fund				
5110	60	Internal Service Fund				
5120	50	Enterprise Fund				
5120	60	Internal Service Fund				

<b>Total Debt Payments - Proprietary Funds</b>						
--	--	--	--	--	--	--



**Bond Details**  
**Governmental Funds**

Debt Category	Debt Issue Date (MM/YYYY)	Principal Amounts Only				Debt at End of Fiscal Year	Current Portion Due Within One Year (Principal and Interest)	Interest Paid During Fiscal Year
		Debt at Beginning of Fiscal Year	Additions	Reductions / Repayments				
General Obligation Bonds/Notes – CIB	12/2003	2,280,000.00		5,000.00	2,275,000.00	1,940,000.00	124,260.00	
General Obligation Bonds/Notes – CIB	10/2009	1,540,000.00		665,000.00	875,000.00	875,000.00	59,937.50	
General Obligation Bonds/Notes – CIB	6/2014	762,778.80		762,778.80			4,958.50	
General Obligation Bonds/Notes – CIB	1/2015	14,940,000.00		560,000.00	14,380,000.00	120,000.00	646,500.00	
Other Long Term Debt/Liabilities		50,000.00	9,450,000.00		9,500,000.00	9,500,000.00	89,678.73	
Other Post-Employment Benefits (OPEB)		7,248,955.00	3,548,582.00	2,029,527.00	8,768,010.00	1,600,000.00		
Compensated Absences		1,469,736.62		67,988.65	1,401,747.97			
Net Pension Liability		147,122,000.00	29,215,000.00	9,920,000.00	166,417,000.00			
<b>Totals for Debt Entered:</b>		<b>\$175,413,470.42</b>	<b>\$42,213,582.00</b>	<b>\$14,010,294.45</b>	<b>\$203,616,757.97</b>	<b>\$14,035,000.00</b>	<b>\$925,334.73</b>	

**General Fund (10)**

**Section 1: Tuition/Purchased Services as Reported within Expenditure Detail**

	<b>Amount</b>
Tuition Reported in General Fund Expenditures 1000-560	12,811,713.46
Purchased Services in General Fund Expenditures 1000-594 and 1000-597	968,384.86
<b>Section 1 Total</b>	<b>\$13,780,098.32</b>

**Section 2: Tuition Paid to Institution Types During Fiscal Year**

	<b>Tuition Paid For Nonspecial Education</b>	<b>Tuition Paid For Special Education</b>	<b>Total</b>
1 1306 Institutions	232,128.42	148,980.51	381,108.93
2 Institutionalized Children's Programs			
3 Juveniles Incarcerated in Adult Facilities			
4 Residential Treatment Facilities	29,517.17	29,800.00	59,317.17
5 Other Local Education Agencies	274,302.09	95,634.60	369,936.69
6 Brick and Mortar Charter Schools	3,411,526.16	1,560,669.08	4,972,195.24
7 Cyber Charter Schools	1,485,306.87	818,652.35	2,303,959.22
8 Career and Technology Centers	3,038,421.00		3,038,421.00
9 Approved Private Schools		40,733.34	40,733.34
10 PA Chartered Schools for the Deaf and Blind			
11 Private Residential Rehabilitative Institutions		119,244.81	119,244.81
12 Juvenile Detention Centers			
13 Special Program Jointures		1,072,670.61	1,072,670.61
14 Other Tuition Not Included Elsewhere In This Section	454,126.45	968,384.86	1,422,511.31
<b>Section 2 Total</b>	<b>\$8,925,328.16</b>	<b>\$4,854,770.16</b>	<b>\$13,780,098.32</b>

LEA : 118408852 Wilkes-Barre Area SD

Printed 5/11/2017 10:48:40 AM

**Food Service / Cafeteria Operations Fund (51)**

**3000 Operation of Non-Instructional Services**

**Total**

**100 Personnel Services – Salaries**

100 Personnel Services – Salaries 250,230.04

**Total Personnel Services – Salaries \$250,230.04**

**200 Personnel Services – Employee Benefits**

210 Group Insurance – Contracted Provider 173,212.69

220 Social Security Contributions 18,532.56

230 PSERS Retirement Contributions 60,203.28

260 Workers’ Compensation 1,628.52

**Total Personnel Services – Employee Benefits \$253,577.05**

**300 Purchased Professional and Technical Services**

330 Other Professional Services 3,600.00

**Total Purchased Professional and Technical Services \$3,600.00**

**400 Purchased Property Services**

410 Cleaning Services 22,993.81

430 Repairs and Maintenance Services 55,310.94

**Total Purchased Property Services \$78,304.75**

**500 Other Purchased Services**

520 Insurance – General 5,655.66

580 Travel 117.27

591 Services Purchased Locally 1,166,048.50

599 Other Miscellaneous Purchased Services 9,039.53

**Total Other Purchased Services \$1,180,860.96**

**600 Supplies**

610 General Supplies 253,818.56

630 Food 1,773,484.82

**Total Supplies \$2,027,303.38**

**700 Property**

740 Depreciation 58,128.62

**Total Property \$58,128.62**

**Total 3000 Operation of Non-Instructional Services \$3,852,004.80**

**Food Service / Cafeteria Operations Fund (51)**

	<u>Elementary</u>	<u>Secondary</u>	<u>Federal</u>	<u>Total</u>
<b>3100 Food Services</b>				
<b>100 Personnel Services – Salaries</b>				
100 Personnel Services – Salaries				250,230.04
<b>Total Personnel Services – Salaries</b>				<b>\$250,230.04</b>
<b>200 Personnel Services – Employee Benefits</b>				
210 Group Insurance – Contracted Provider				173,212.69
220 Social Security Contributions				18,532.56
230 PSERS Retirement Contributions				60,203.28
260 Workers' Compensation				1,628.52
<b>Total Personnel Services – Employee Benefits</b>				<b>\$253,577.05</b>
<b>300 Purchased Professional and Technical Services</b>				
330 Other Professional Services				3,600.00
<b>Total Purchased Professional and Technical Services</b>				<b>\$3,600.00</b>
<b>400 Purchased Property Services</b>				
410 Cleaning Services				22,993.81
430 Repairs and Maintenance Services				55,310.94
<b>Total Purchased Property Services</b>				<b>\$78,304.75</b>
<b>500 Other Purchased Services</b>				
520 Insurance – General				5,655.66
580 Travel				117.27
591 Services Purchased Locally				1,166,048.50
599 Other Miscellaneous Purchased Services				9,039.53
<b>Total Other Purchased Services</b>				<b>\$1,180,860.96</b>
<b>600 Supplies</b>				
610 General Supplies				253,818.56
630 Food				1,773,484.82
<b>Total Supplies</b>				<b>\$2,027,303.38</b>
<b>700 Property</b>				
740 Depreciation				58,128.62
<b>Total Property</b>				<b>\$58,128.62</b>
<b>Total 3100 Food Services</b>				<b>\$3,852,004.80</b>

	<u>Food Service(51)</u>	<u>Child Care Operations(52)</u>	<u>Other Enterprise(58)</u>	<u>Internal Service(60)</u>	<u>Total</u>
<b>3000 <u>Operation of Non-Instructional Services</u></b>					
3100 Food Services	3,852,004.80				3,852,004.80
<b>Total Operation of Non-Instructional Services</b>	<b>\$3,852,004.80</b>				<b>\$3,852,004.80</b>
<b>TOTAL ACTUAL EXPENDITURES &amp; OTHER FINANCING USES</b>	<b>\$3,852,004.80</b>				<b>\$3,852,004.80</b>