

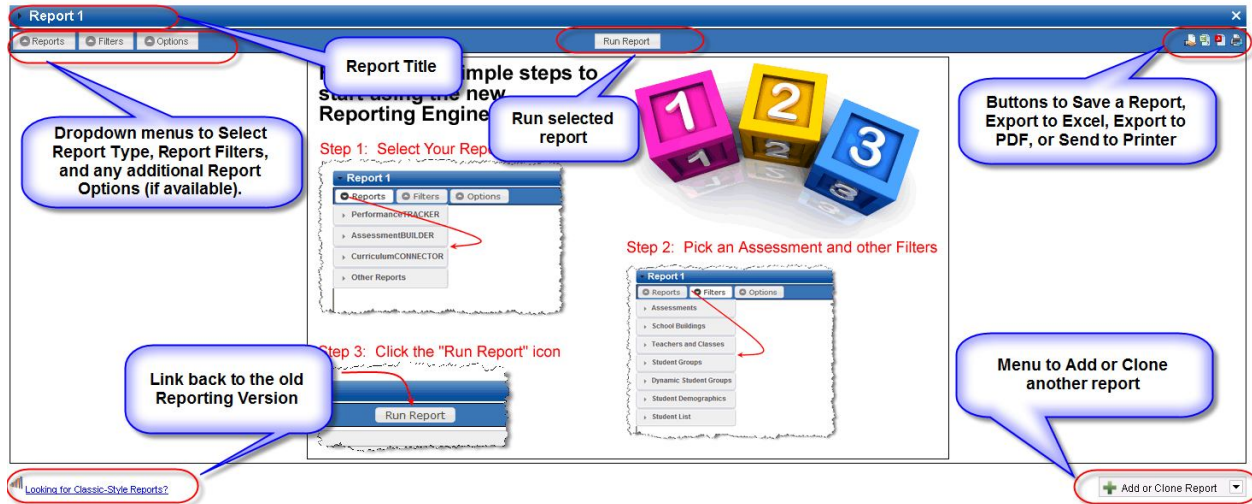


Performance P L U S[®]

PerformancePPLUS
Reporting Engine 4.0 Overview

Reports 4.0 Overview

Main Reporting Page



Steps to running a report Step 1



Step 2

Report 1

Reports Filters Options

PerformanceTRACKER
Proficiency and Standards Reports

AssessmentBUILDER
Item-Level Reports

CurriculumCONNECTOR
Mapping and Planning Reports

MyREPORTS
Saved and Shared Reports

Select 'Report Type'

Step 1: Select Your Report T

Step 3

Report 1

Reports Filters Options

PerformanceTRACKER
Proficiency and Standards Reports

Assessment Sections - Bar Chart

Proficiency Level - Pie Chart

Standards Bar Chart

Comparative Report - Standards

Comparative Report - Proficiency Levels

Assessment Scores

Standards Testing Frequency

Mass Print Student Assessment Detail (PDF)

Cumulative Progress (PDF)

Assessment Score Monitor

"Any Two" Scatter Plot

Learning Gains

AssessmentBUILDER
Item-Level Reports

CurriculumCONNECTOR
Mapping and Planning Reports

Select a 'Report'

Step 1: Select Your

Step 3: Click the "Rl"

Step 4

Report 1

Reports Filters Options

PerformanceTRACKER
Proficiency and Standards Reports

- Assessment Sections - Bar Chart
- Proficiency Level - Pie Chart**
- Standards Bar Chart
- Comparative Report - Standards
- Comparative Report - Proficiency Levels
- Assessment Scores
- Standards Testing Frequency
- Mass Print Student Assessment Detail (PDF)
- Cumulative Progress (PDF)
- Assessment Score Monitor
- "Any Two" Scatter Plot
- Learning Gains

AssessmentBUILDER
Item-Level Reports

CurriculumCONNECTOR
Mapping and Planning Reports

Select 'Filters' menu

Follow these steps to generate your report:

Report 1

Reports Filters Options

- PerformanceTRACKER
- AssessmentBUILDER
- CurriculumCONNECTOR
- Other Reports

Step 3: Click the "Run" button

Step 5

Report 1

Reports Filters Options

- Assessments
- School Buildings
- Teachers and Classes
- Student Groups
- Dynamic Student Groups
- Student Demographics
- Student List
- Filters

Select a filter criteria

Follow these steps to generate your report:

Report 1

Reports Filters Options

- PerformanceTRACKER
- AssessmentBUILDER
- CurriculumCONNECTOR
- Other Reports

Step 6

Report 1

Reports Filters Options

Assessments

Select Assessments

Year: 2010-11 only

Subject: -ALL-

Grade Range: Fifth Grade only

Series: -ALL-

Name:

☒ Only show assessments with scores

Show Assessments

Selected Assessments:
None Selected.

School Buildings

Teachers and Classes

Follow these steps to start using the PerformancePLUS Reporting Engine

Report 1

PerformanceTRACKER

AssessmentBUILDER

CurriculumCONNECTOR

Other Reports

Step 3: Click the "Run Report" button

Step 7

Report 1

Reports Filters Options Run Report

Assessments

Select Assessments

Year: 2010-11

Subject: -ALL-

Grade Range: Fifth Grade

Series: -ALL-

Name:

☒ Only show assessments with scores

Show Assessments

Select an assessment to add it to the list

	Assessment	Date	GR	Subject	Scores?	Ques?
<input checked="" type="checkbox"/>	5th Grade Fall Math Benchmark Gr5	9/1/2010	5	Math	✓	✓
<input type="checkbox"/>	AIMSweb 2010-11 Fall - Math - Grade 5 Gr5	9/30/2010	5	Math	✓	
<input type="checkbox"/>	AIMSweb 2010-11 Fall - Reading - Grade 5 Gr5	9/30/2010	5	Reading and Writing	✓	
<input type="checkbox"/>	Study Island - Arts and Humanities- Benchmark - Grade 5 v2010-11 Gr5	9/1/2010	5	Arts and Humanities	✓	
<input type="checkbox"/>	Writing Prompt - Gr5	9/23/2011	5	Reading and Writing	✓	

Selected Assessments:

<input checked="" type="checkbox"/>	5th Grade Fall Math Benchmark	Gr5	9/1/2010	
-------------------------------------	-------------------------------	-----	----------	--

School Buildings

Step 8

Report 1

Reports Filters Options

Assessments

School Buildings

Teachers and Classes

Select Teacher / Classes

Year: 2010-11

Subject: -ALL-

Grade Range: Kindergarten only

Teacher: -ALL-

Class Name:

☐ Only show classes for your selected assessment(s)

Show Classes

Selected Classes:
None Selected.

Student Groups

Dynamic Student Groups

Student Demographics

Student List

Click the "Run Report"

Run Report

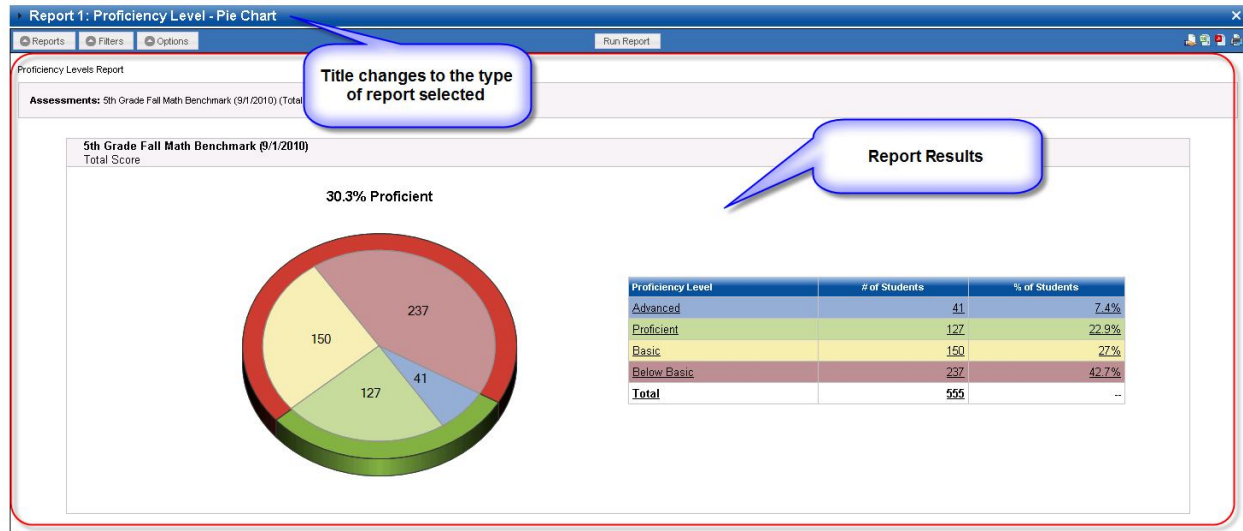
Step 9

Running Report

steps to

1 2 3

Select "Run Report"

Step 10

More than one report can be added to the page or a new browser page, all running independently of each other.

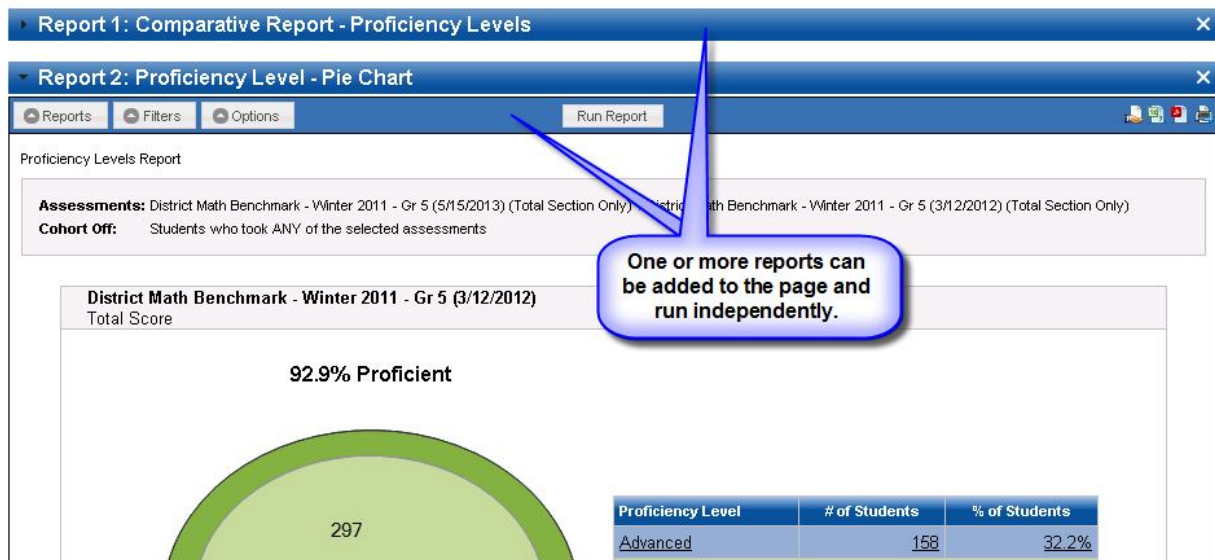
Report 1: Comparative Report - Proficiency Levels

Looking for Classic-Style Reports?

You can add any number of reports, all running independently of one another

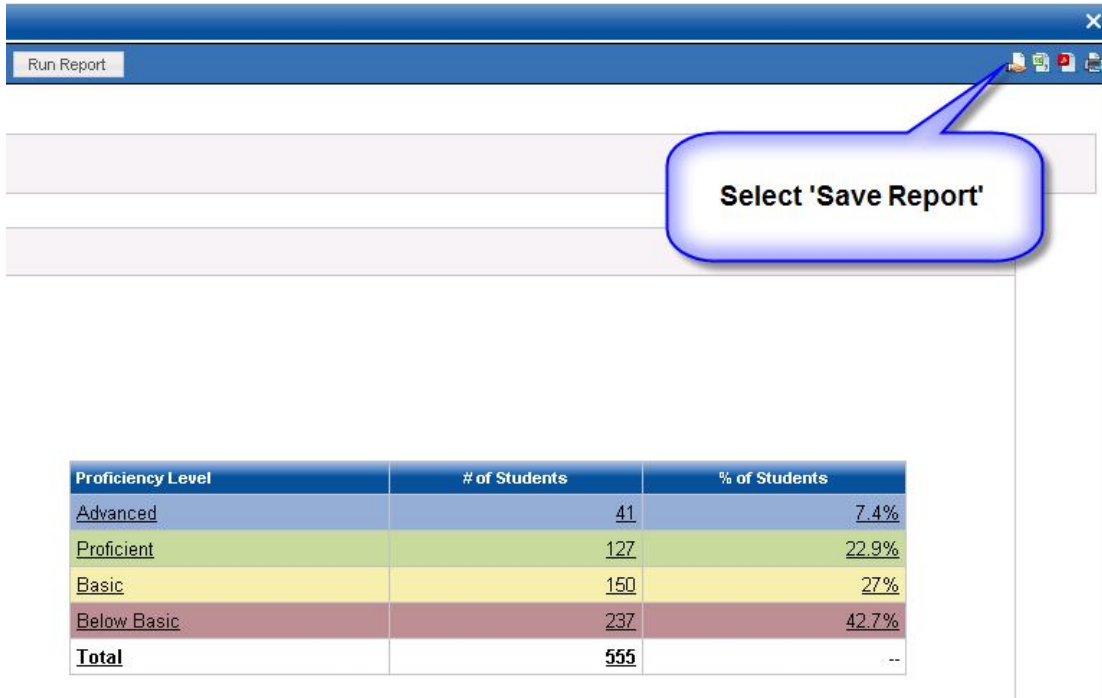
Here you can choose to either clone the existing report, create a New report in the current

- + Add or Clone Report
- + Add or Clone Report
- + Add New In Current Window
- + Add New In New Window
- + Clone Report 1 Comparati



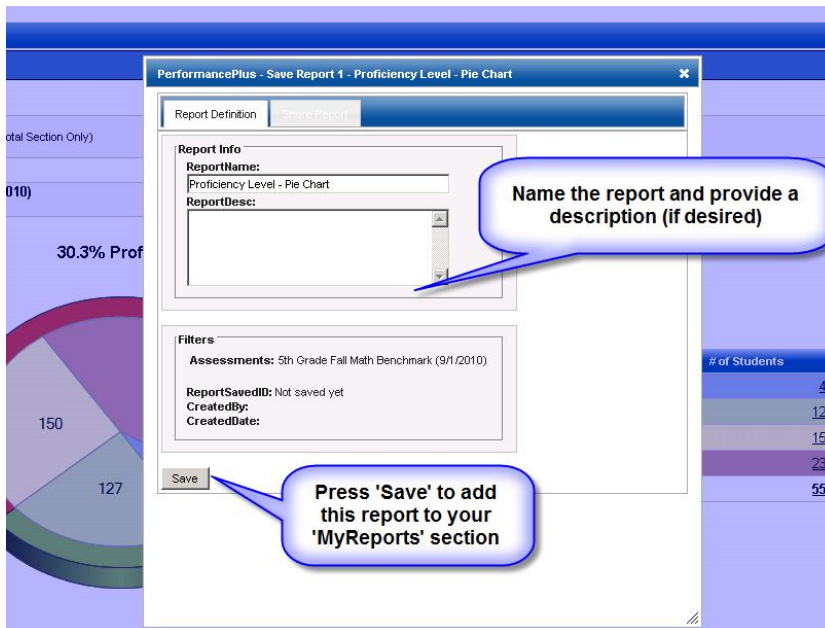
Once a report is displayed on the screen, you will have the option to either **Save & Share** the report, **Export** the report to **Excel** or **PDF** format, or send the report to the **printer**.

Save Report



The screenshot shows the 'Run Report' button at the top left. In the top right corner, there are icons for saving, exporting, and printing. A callout bubble points to the save icon with the text 'Select 'Save Report''.

Proficiency Level	# of Students	% of Students
Advanced	41	7.4%
Proficient	127	22.9%
Basic	150	27%
Below Basic	237	42.7%
Total	555	--



The screenshot shows the 'PerformancePlus - Save Report 1 - Proficiency Level - Pie Chart' dialog box. It has two tabs: 'Report Definition' and 'Share Report'. The 'Report Definition' tab is active, showing fields for 'ReportName' (Proficiency Level - Pie Chart) and 'ReportDesc'. A callout bubble points to the 'ReportDesc' field with the text 'Name the report and provide a description (if desired)'. Below these fields is a 'Filters' section with 'Assessments: 5th Grade Fall Math Benchmark (9/1/2010)', 'ReportSavedID: Not saved yet', 'CreatedBy:', and 'CreatedDate:'. A 'Save' button is at the bottom left. A callout bubble points to the 'Save' button with the text 'Press 'Save' to add this report to your 'MyReports' section'.

Share Report

PerformancePLUS - Save Report 1 - Proficiency Level - Pie Chart

Report Definition | **Share Report**

Report Info

ReportName:
Proficiency Level - Pie Chart (Chris)

ReportDesc:
Another Proficiency Level Pie Chart

Filters

Assessments: 5th Grade Fall Math Benchmark (9/1/2010)

ReportSavedID: 30021
CreatedBy: Hartman, Chris
CreatedDate: 08/15/2012

Save
Successfully saved

Share this report with Colleagues

Save was successful!

I - Pie Chart (Chris)

chmark (9/1/2010) (Total Section Only)

enchmark (9/1/2010)

30.3% Prof

150

127

of Students

Export to Excel

Report 1: Proficiency Level - Pie Chart (Chris)

Reports | Filters | Options | Run Report

Proficiency Levels Report

Assessments: 5th Grade Fall Math Benchmark (9/1/2010) (Total Section Only)

5th Grade Fall Math Benchmark (9/1/2010)

Total Score

30.3% Proficient

150

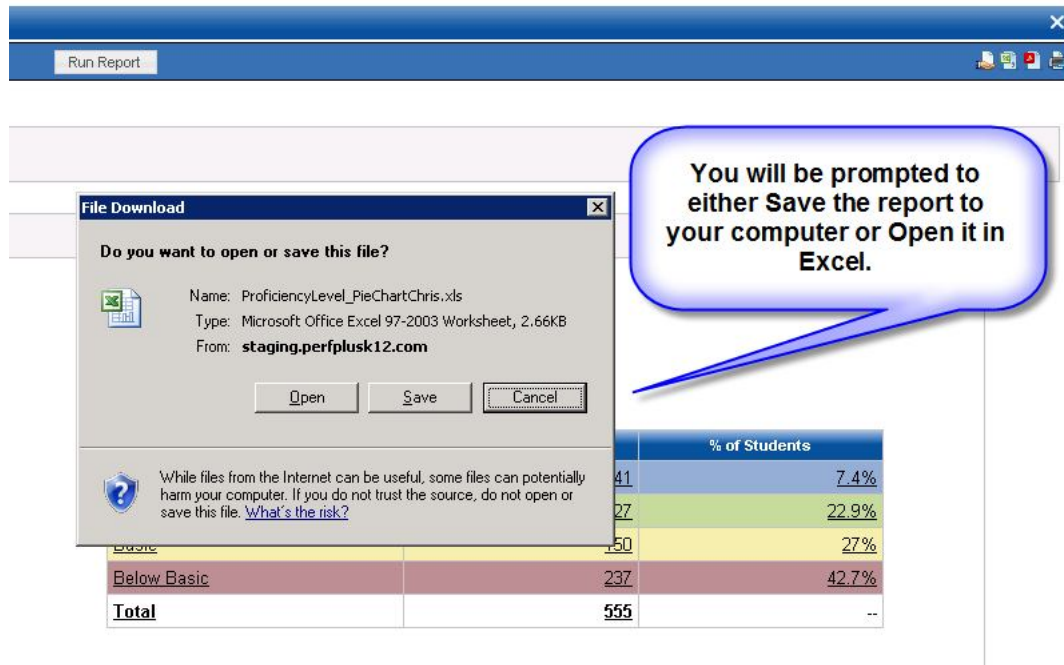
127

41

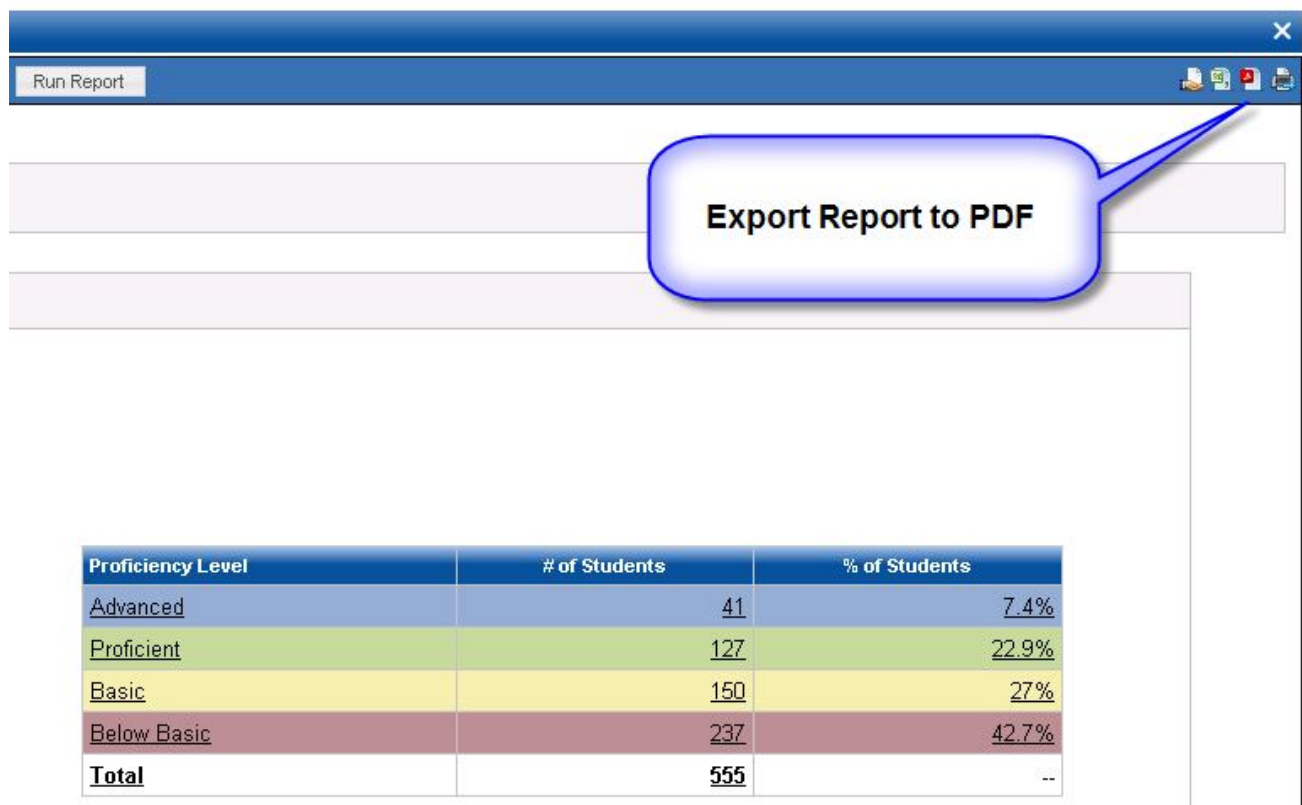
237

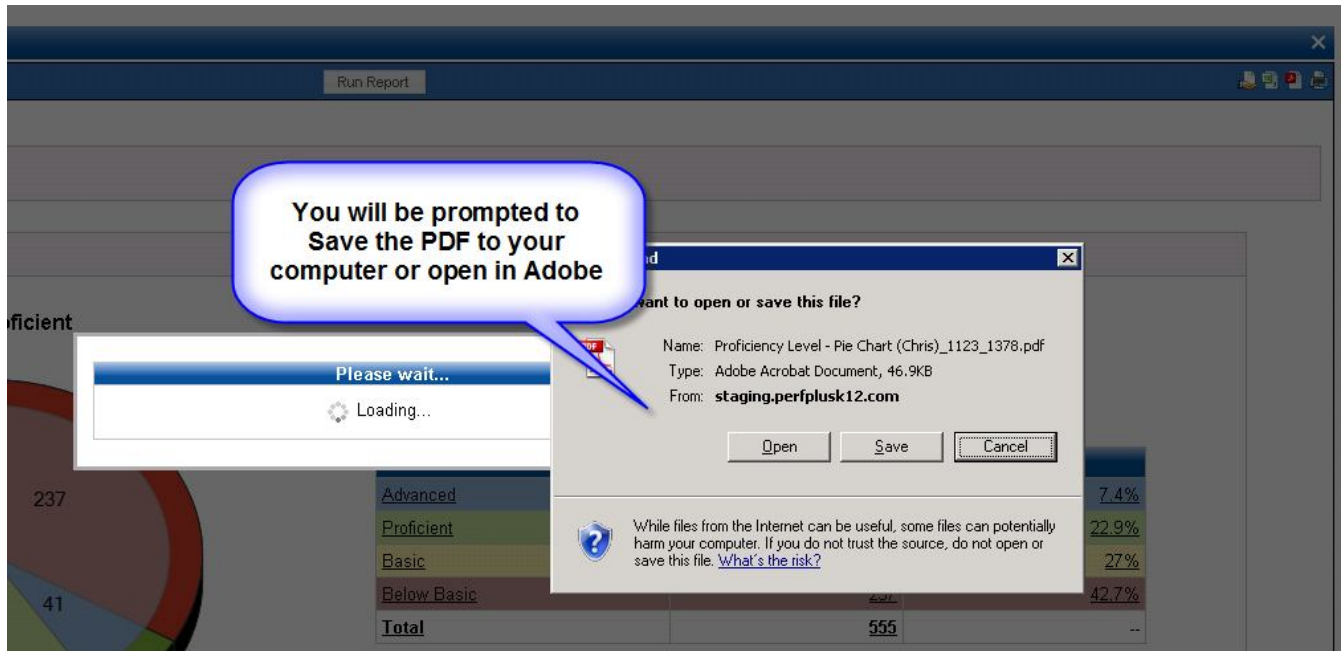
Export Report to Excel

Proficiency Level	# of Students	% of Students
Advanced	41	7.4%
Proficient	127	22.9%
Basic	150	27%
Below Basic	237	42.7%
Total	555	--



Export to PDF





Send to Printer

